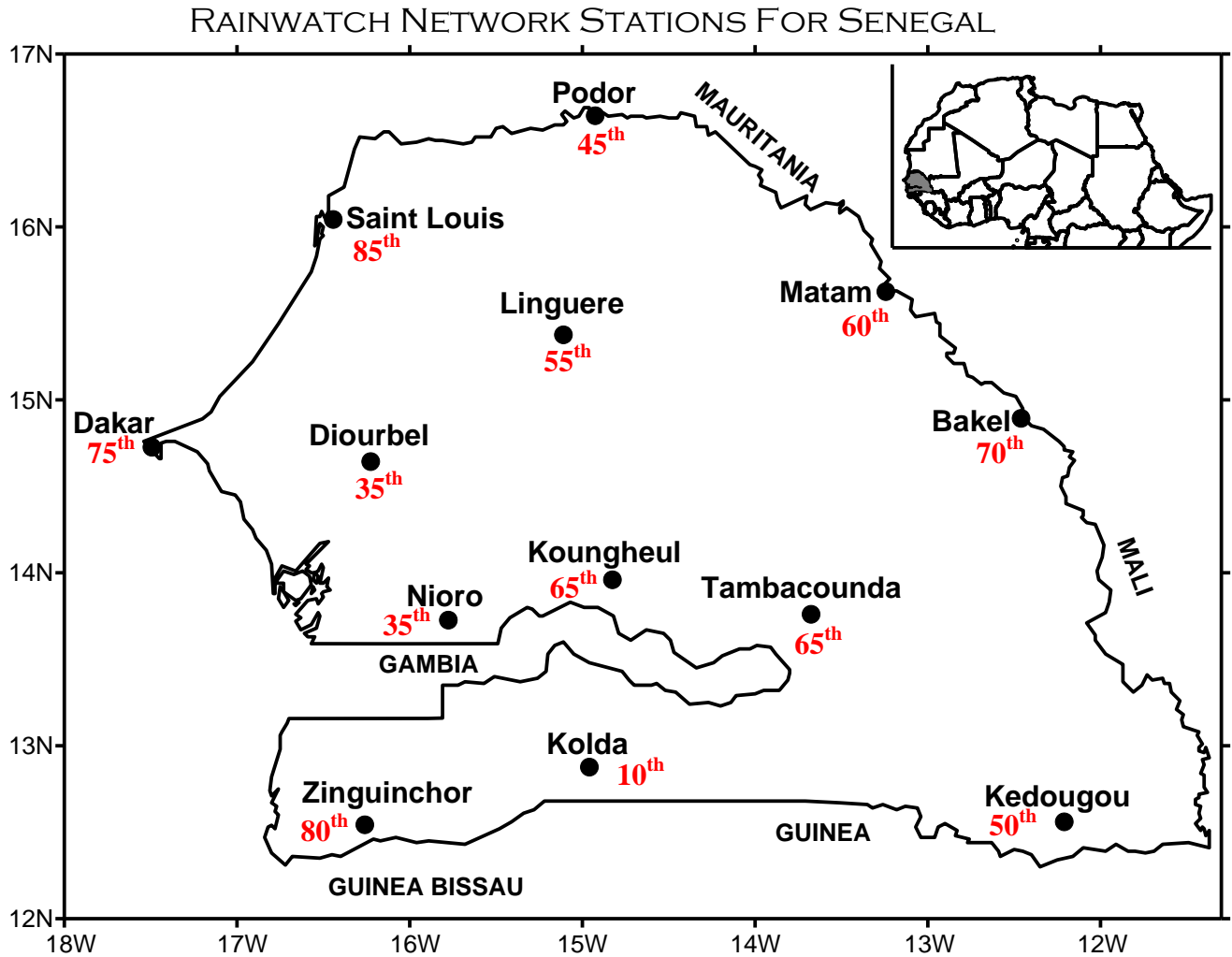
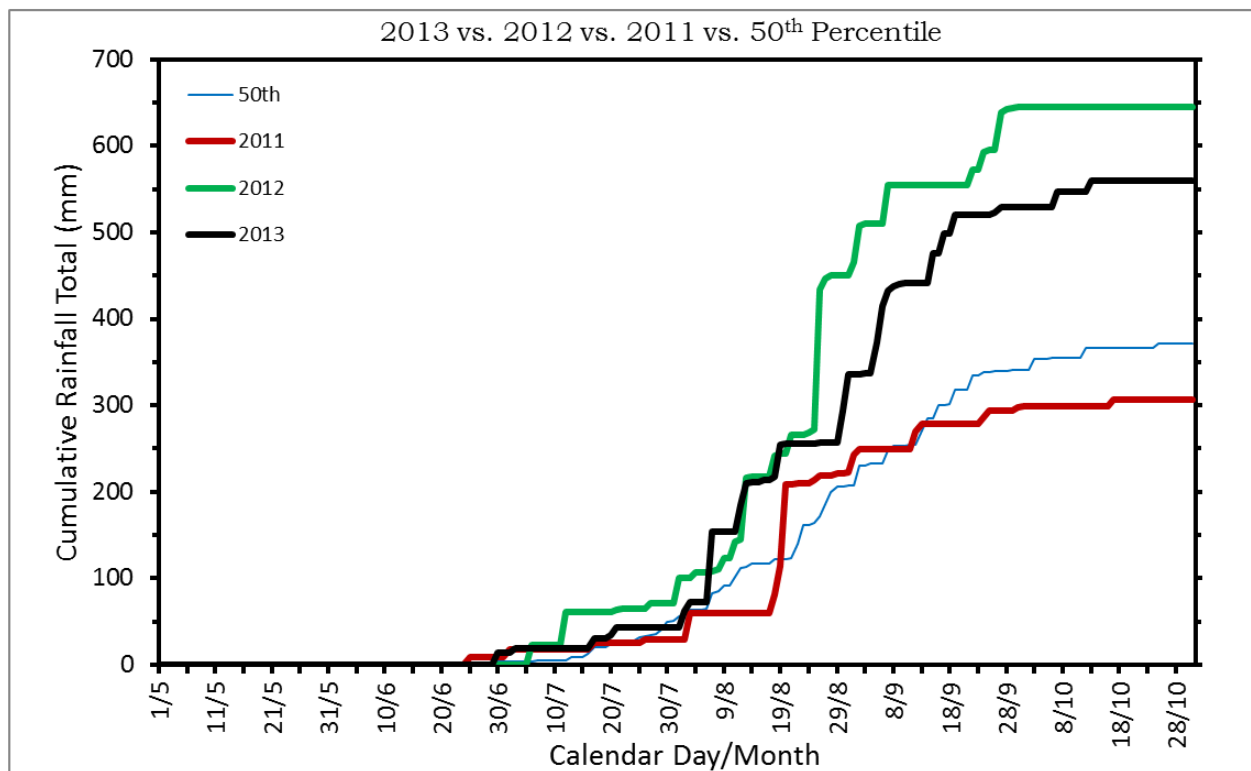
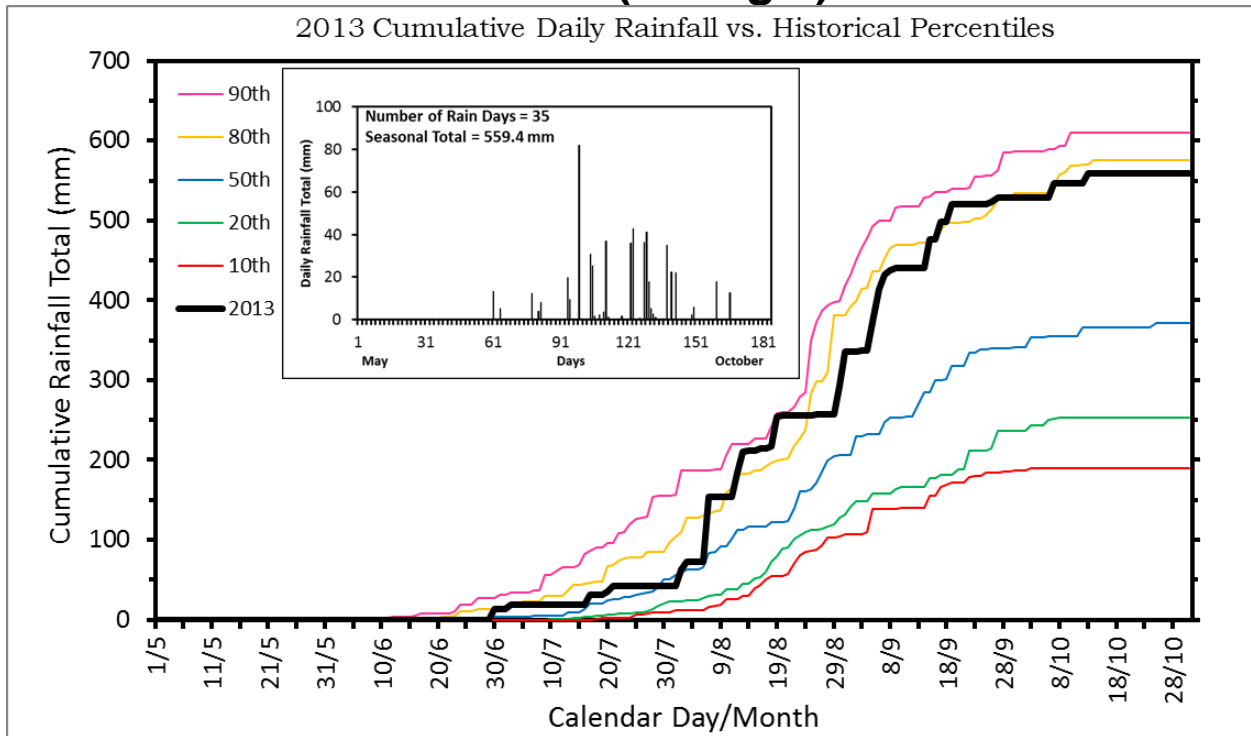


2013 MONSOON RAINWATCH OVER SENEGAL FROM MAY 1 TO OCTOBER 31, 2013

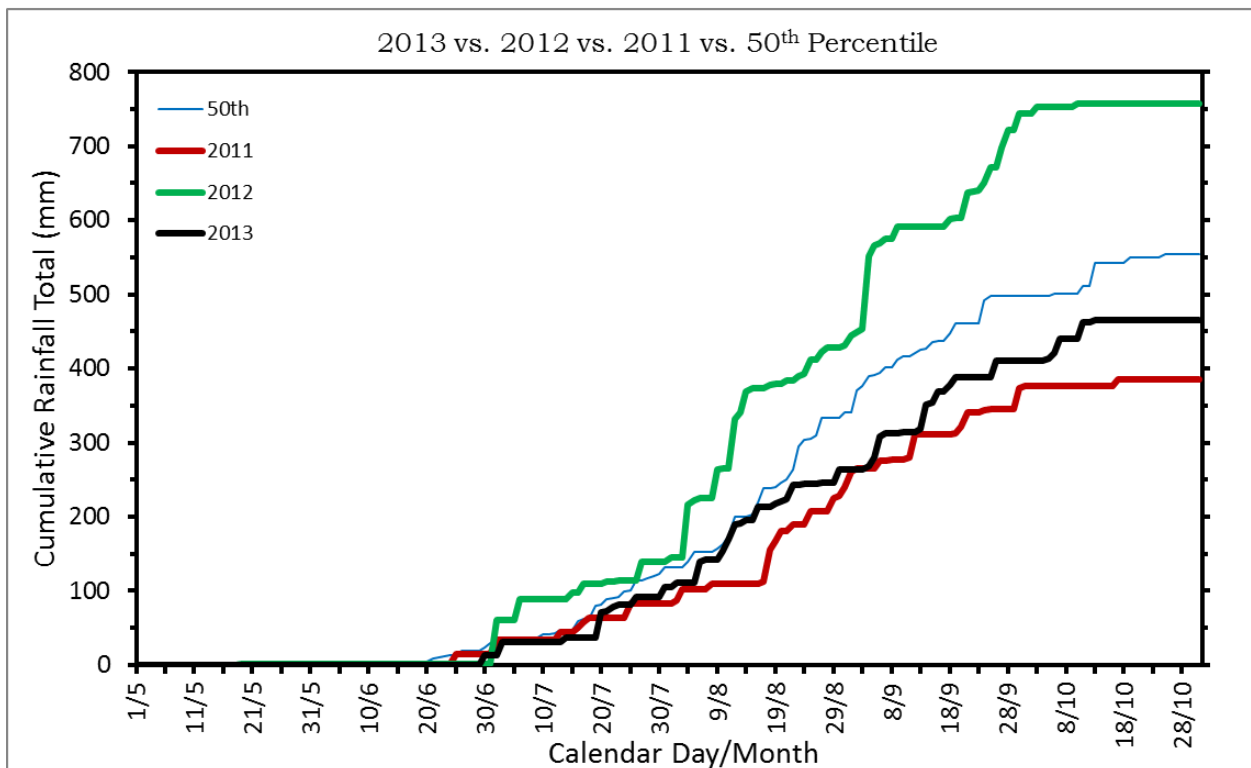
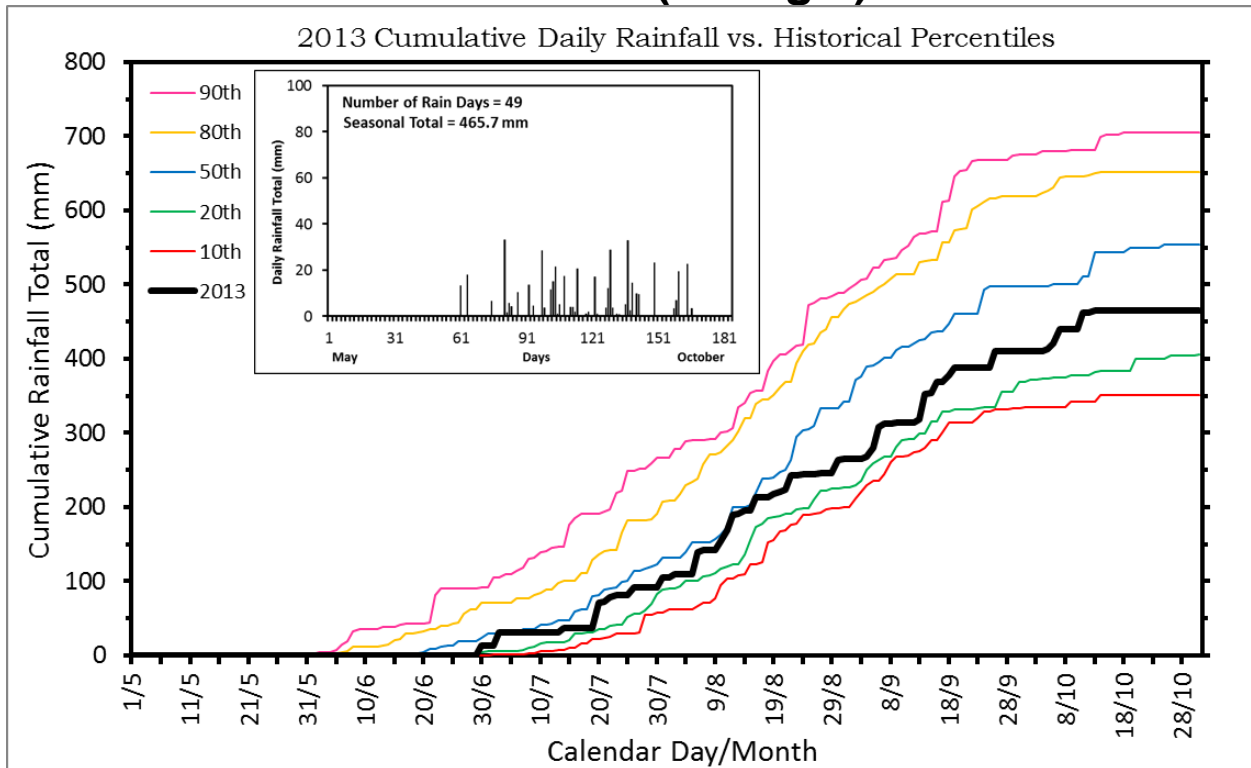


Number for each station gives the approximate cumulative percentile through October 31

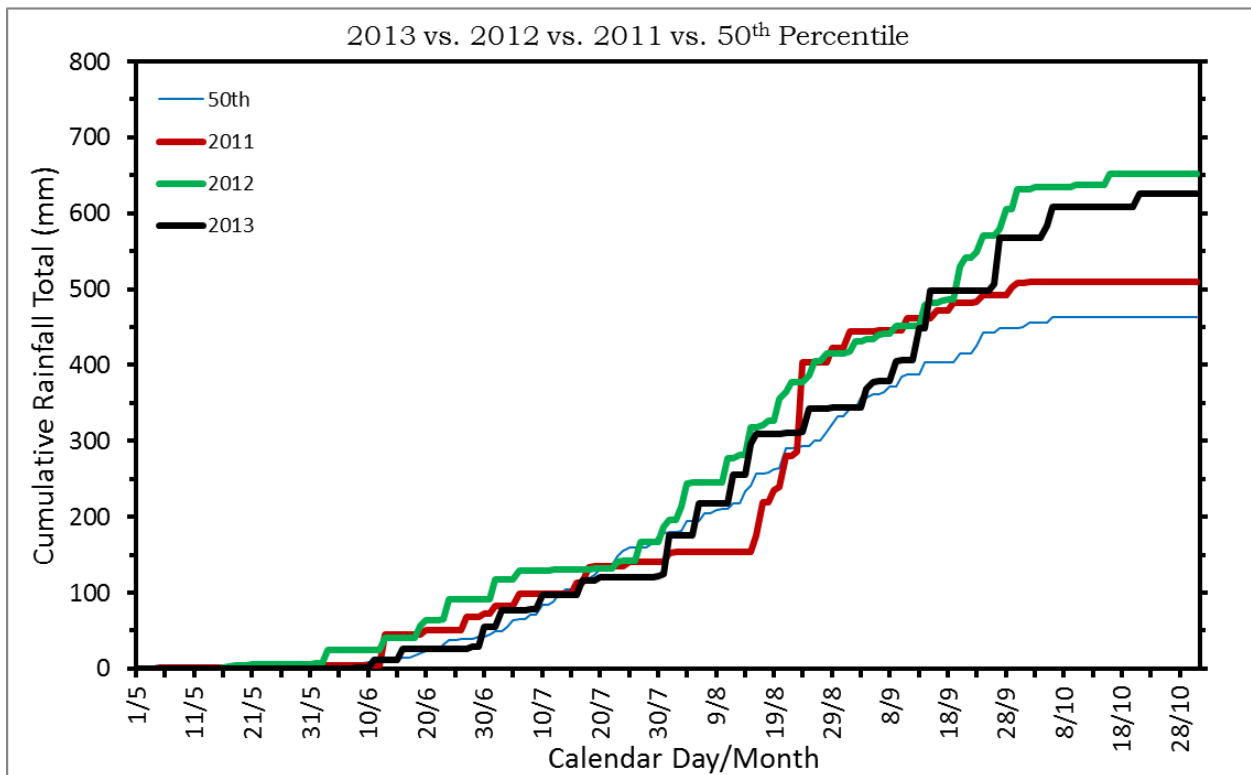
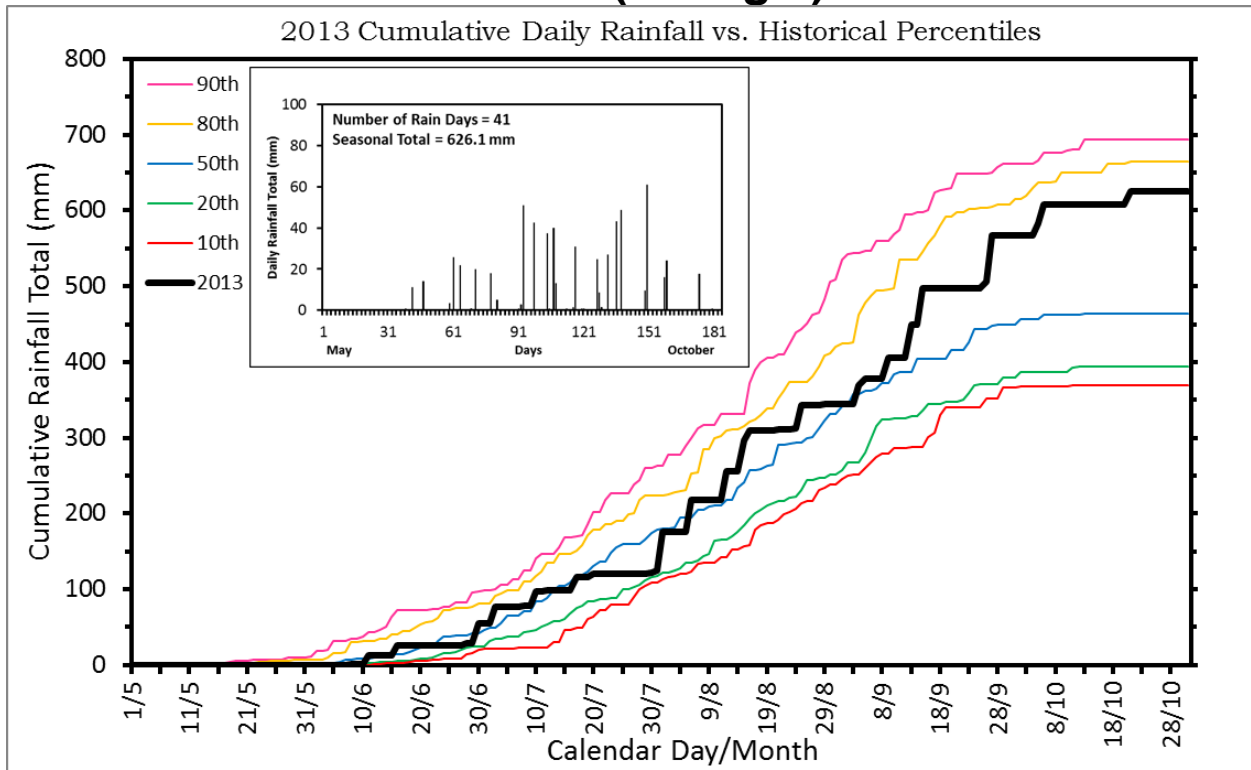
DAKAR (Senegal)



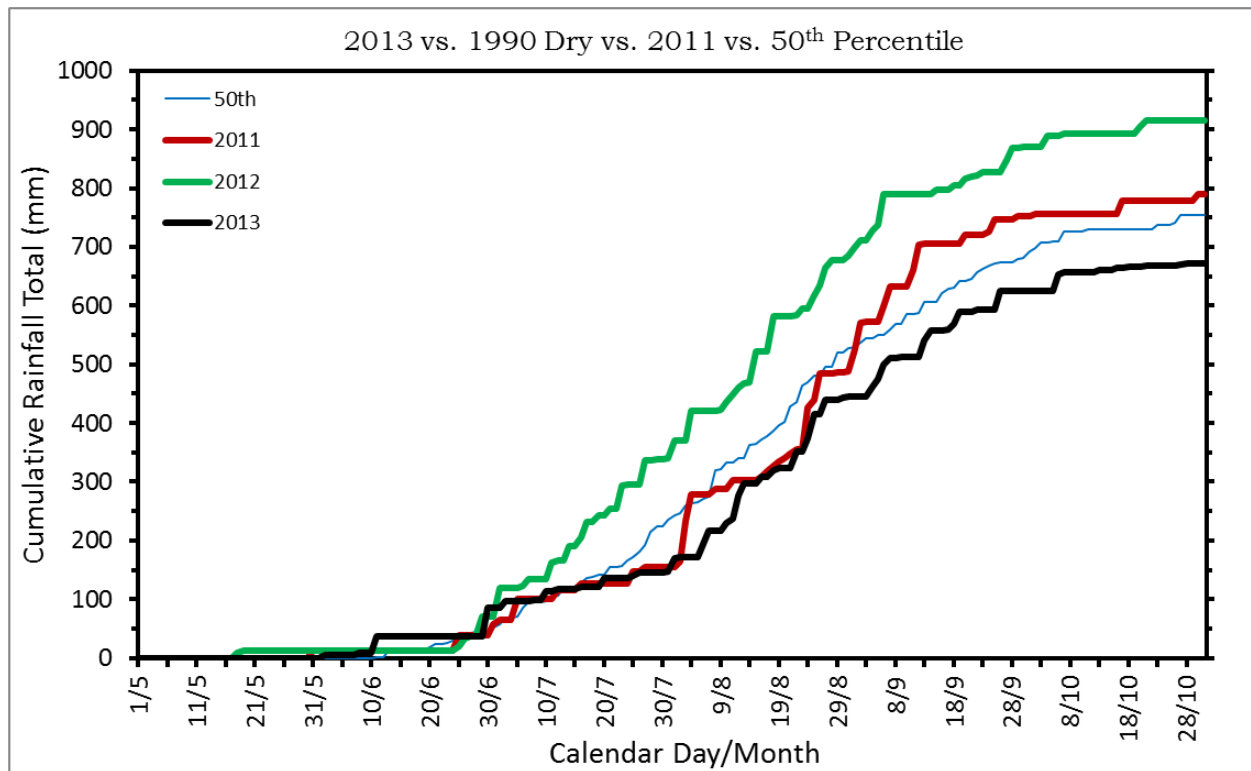
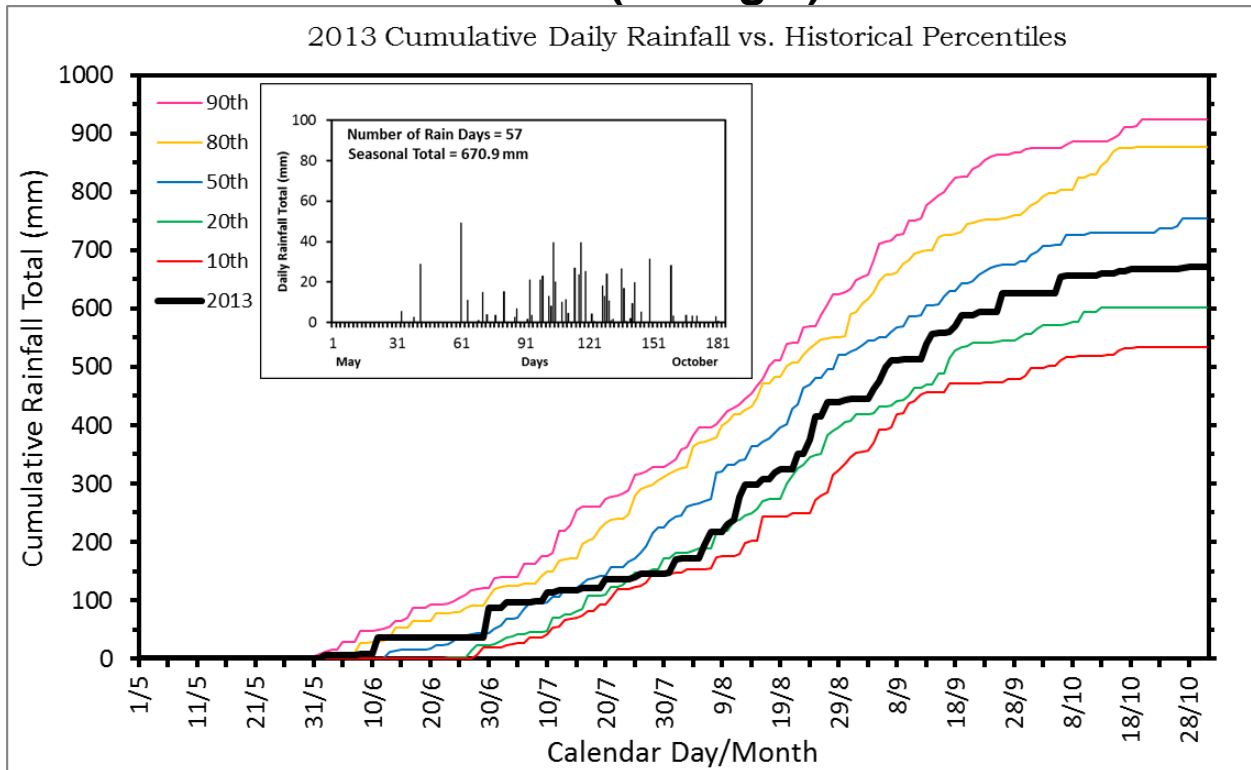
DIOURBEL (Senegal)



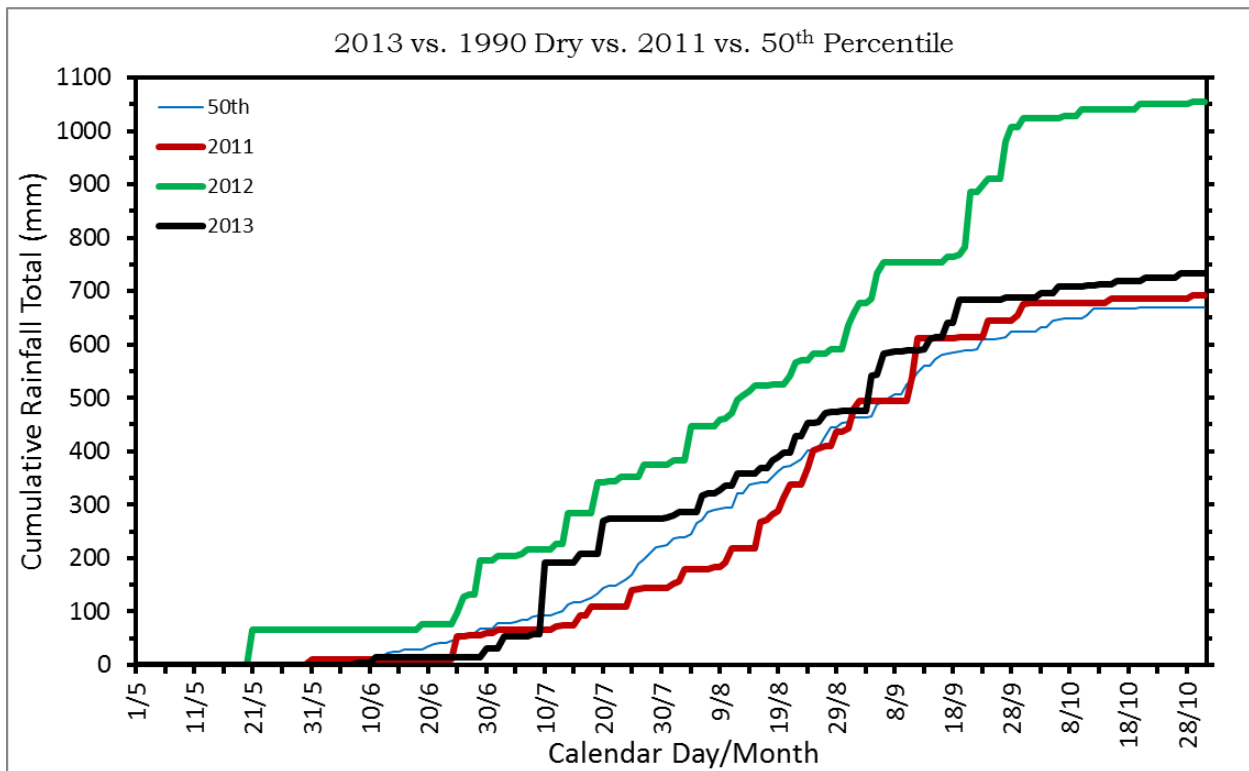
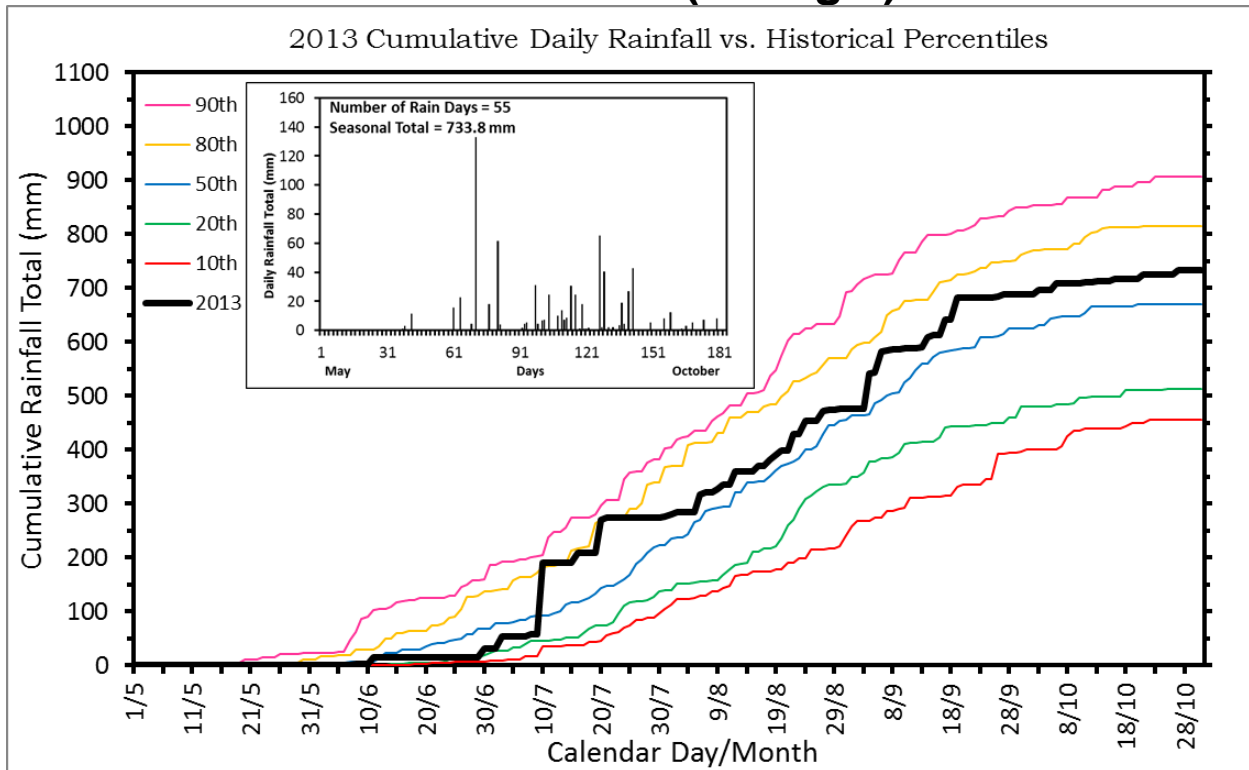
BAKEL (Senegal)



NIORO (Senegal)

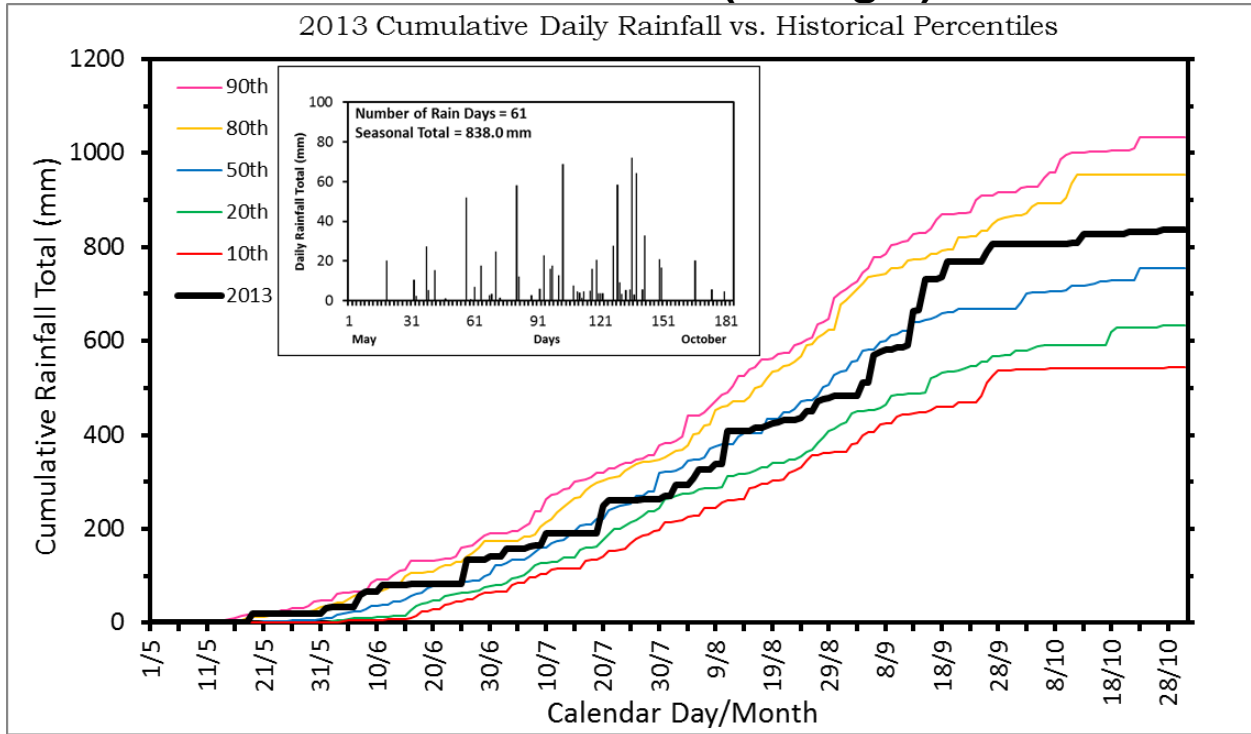


KOUNGHEUL (Senegal)

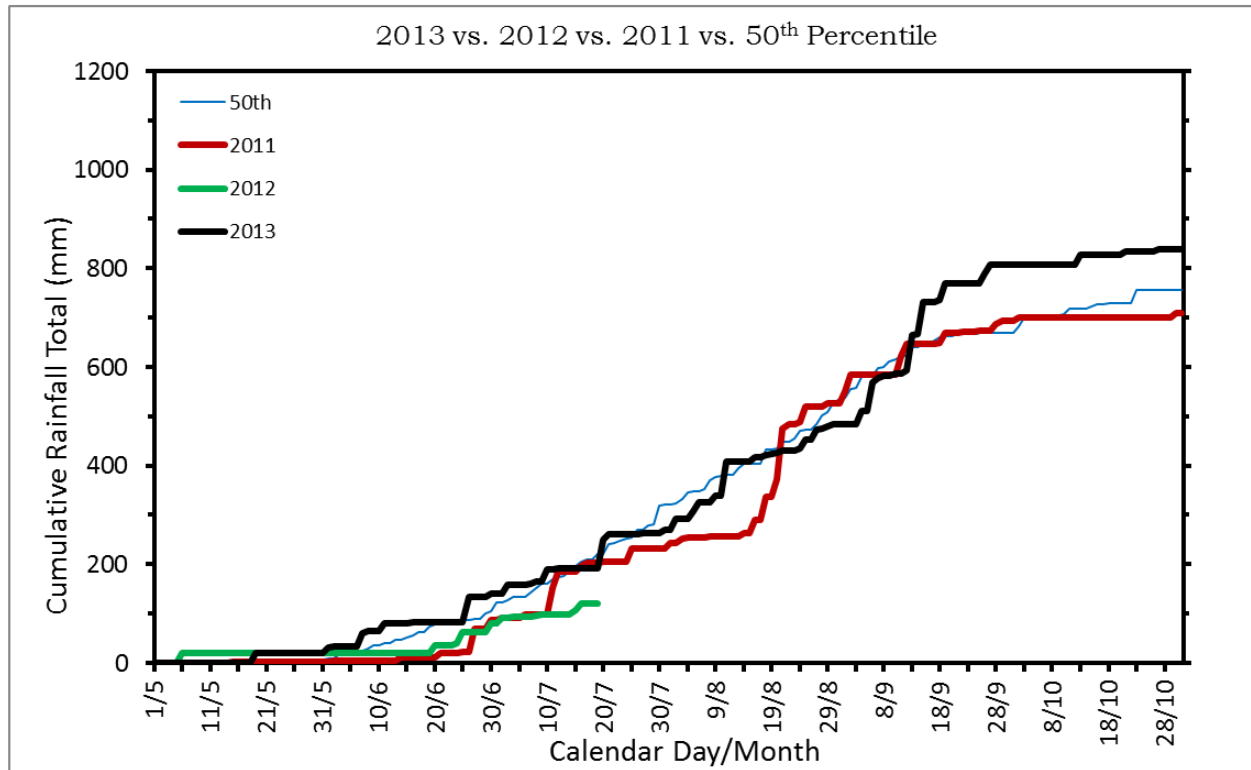


TAMBACOUNDA (Senegal)

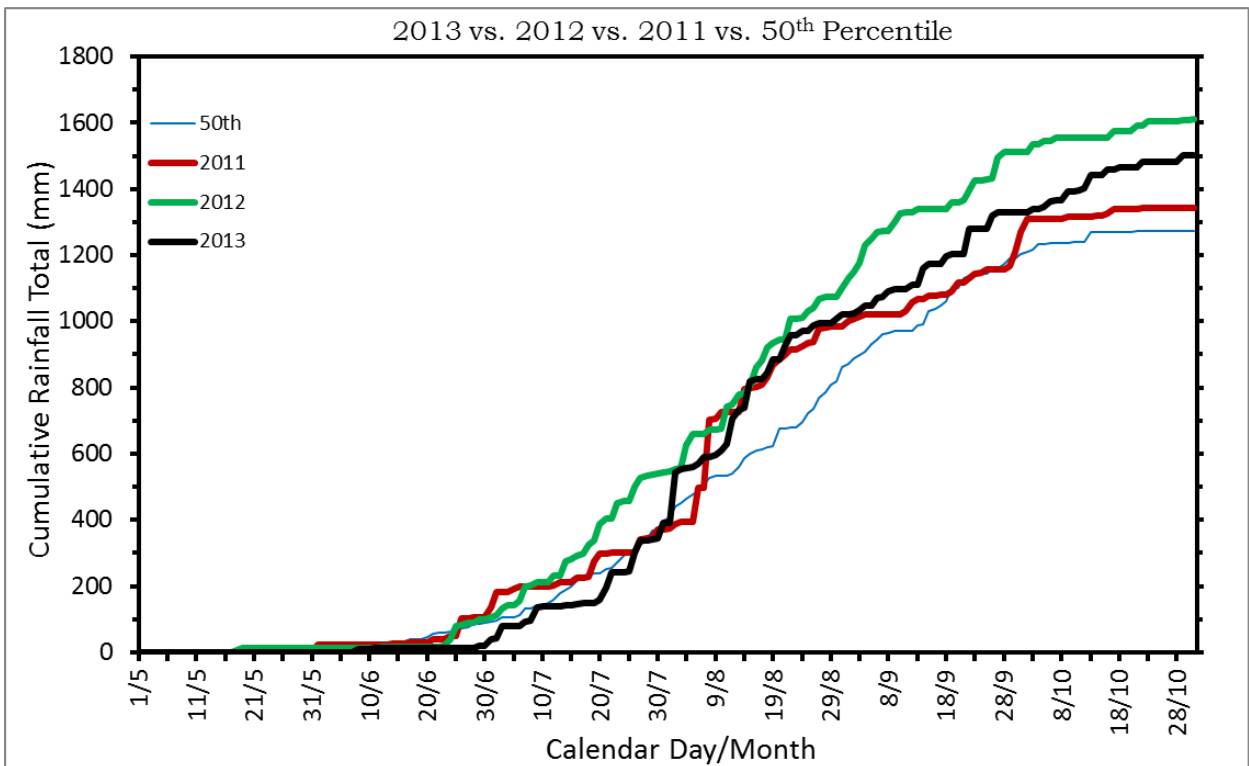
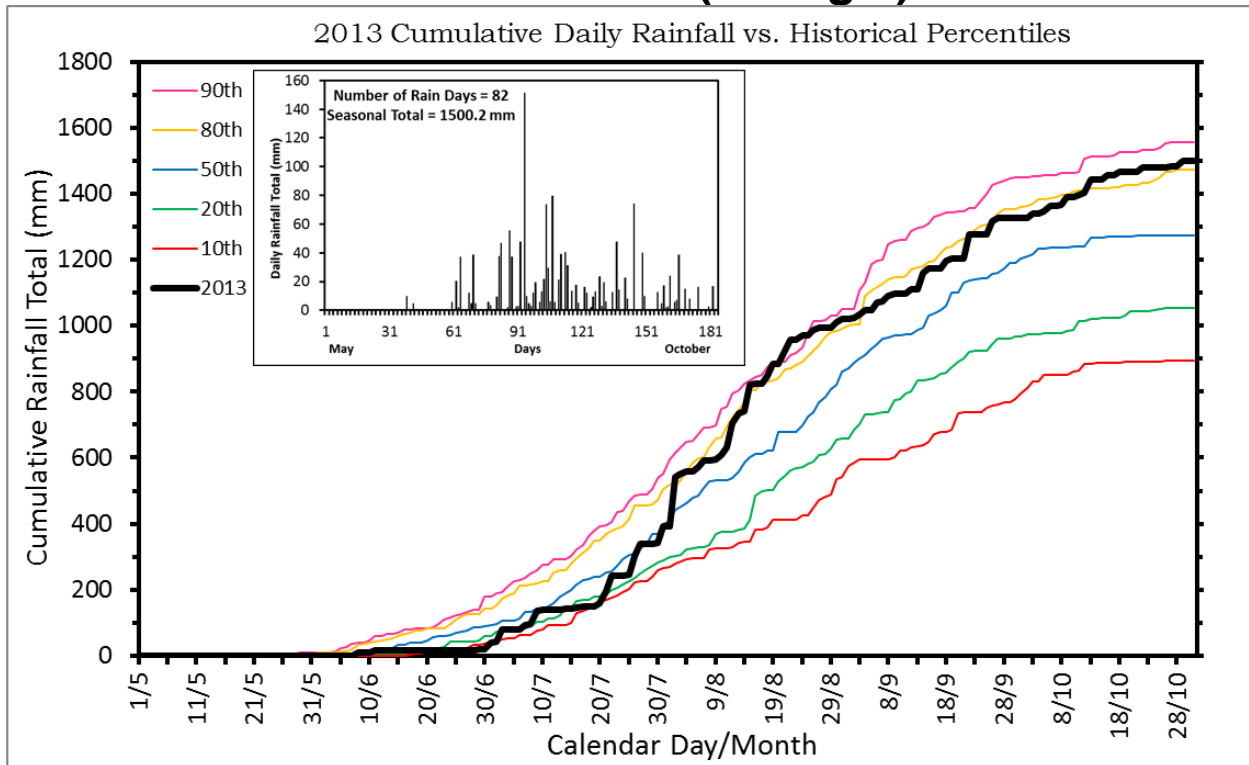
2013 Cumulative Daily Rainfall vs. Historical Percentiles



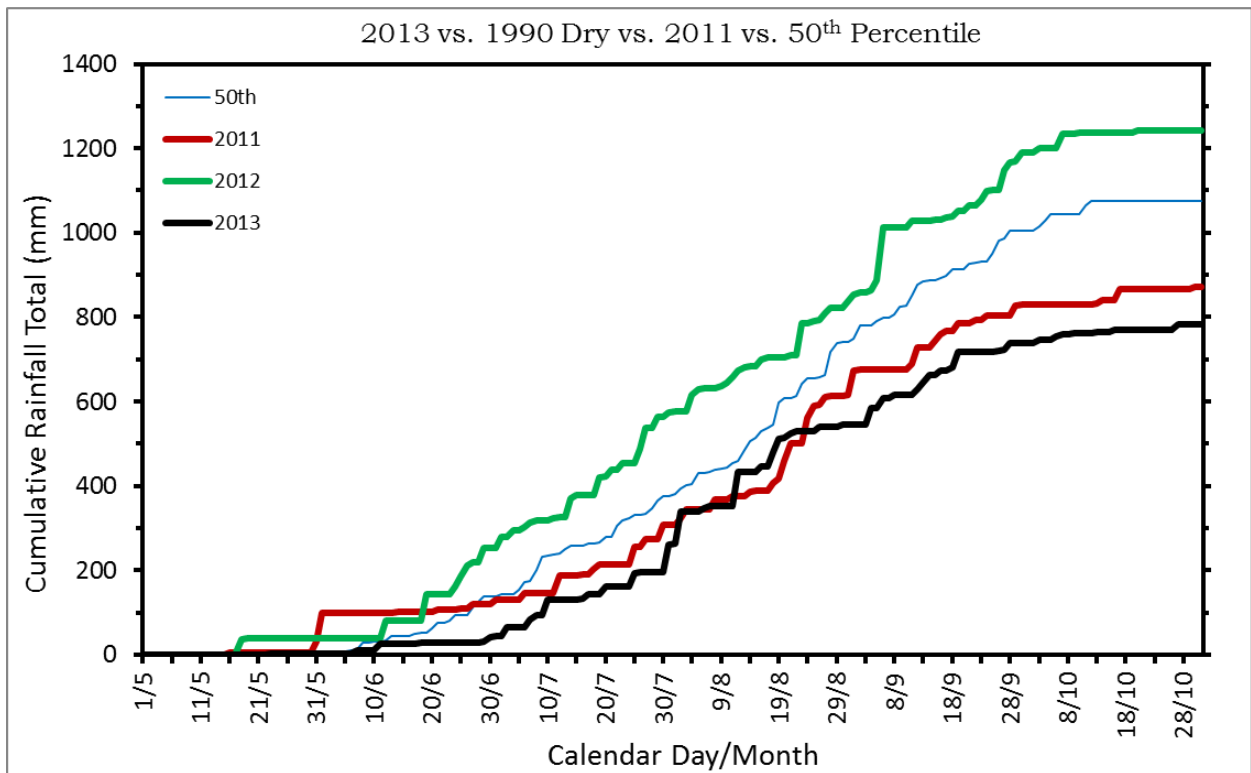
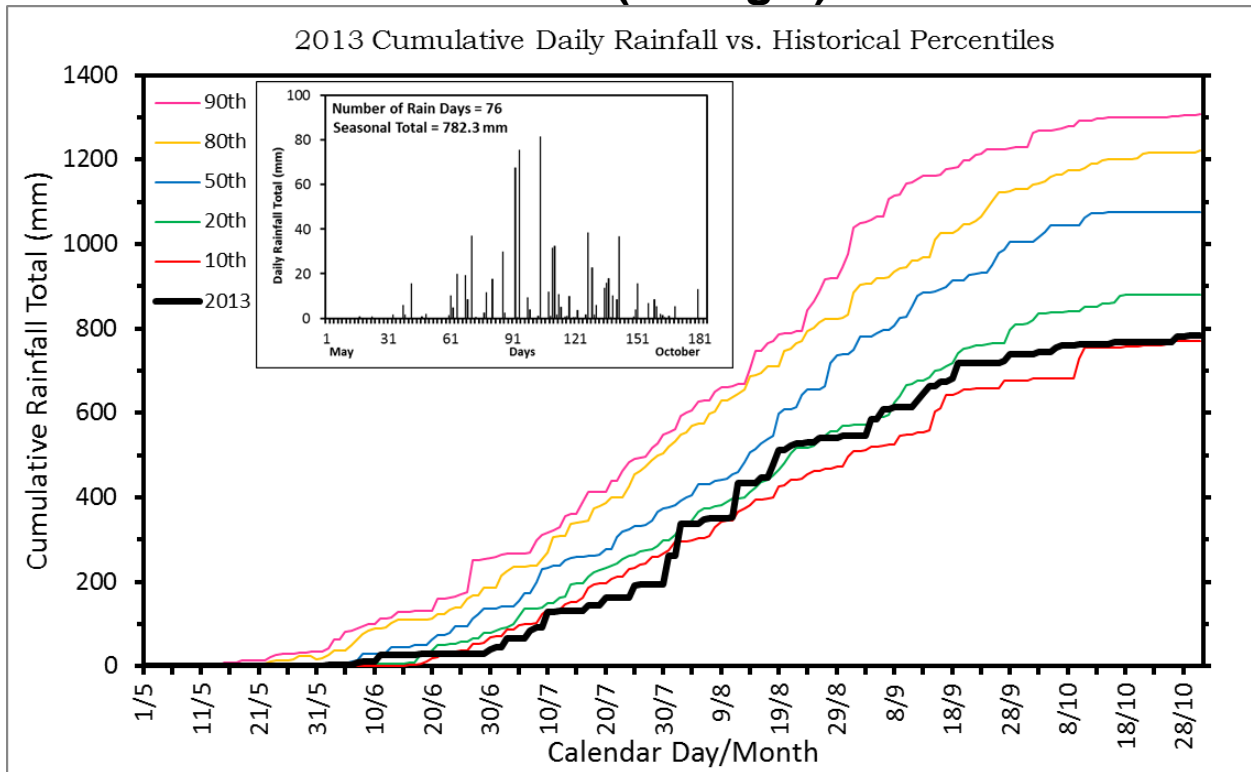
2013 vs. 2012 vs. 2011 vs. 50th Percentile



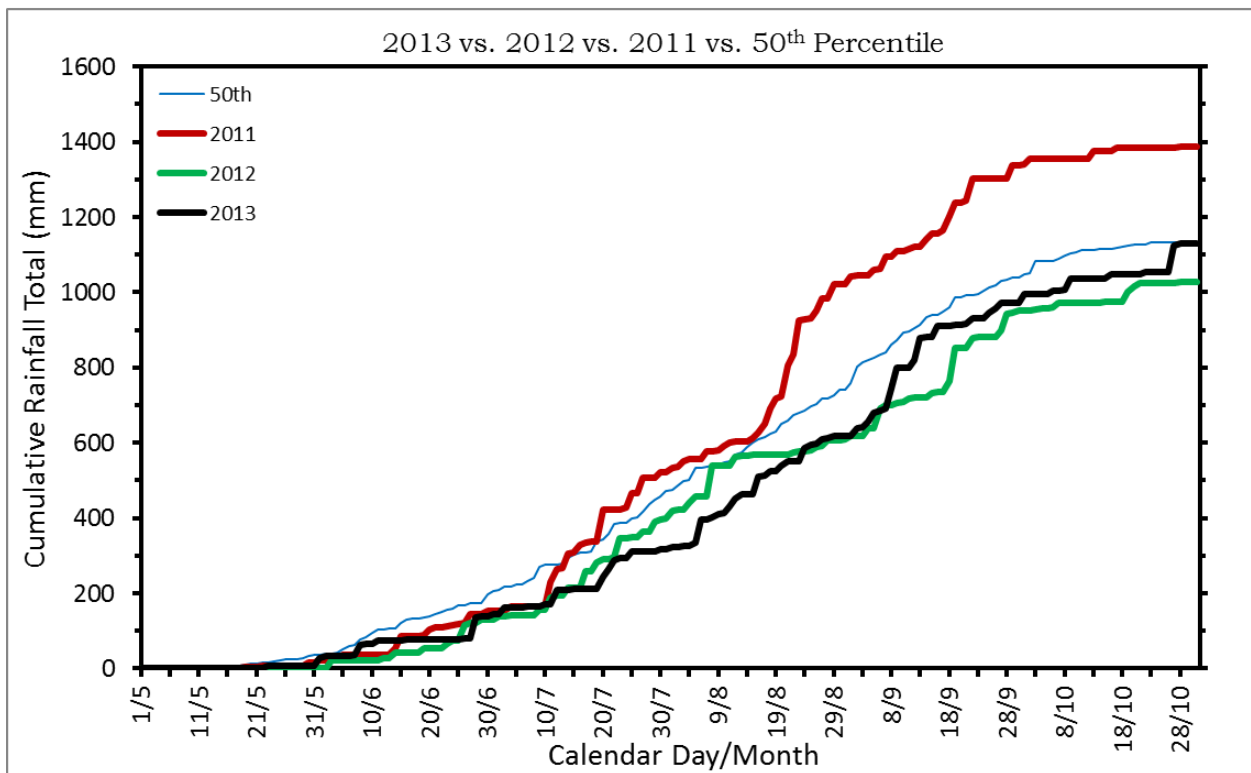
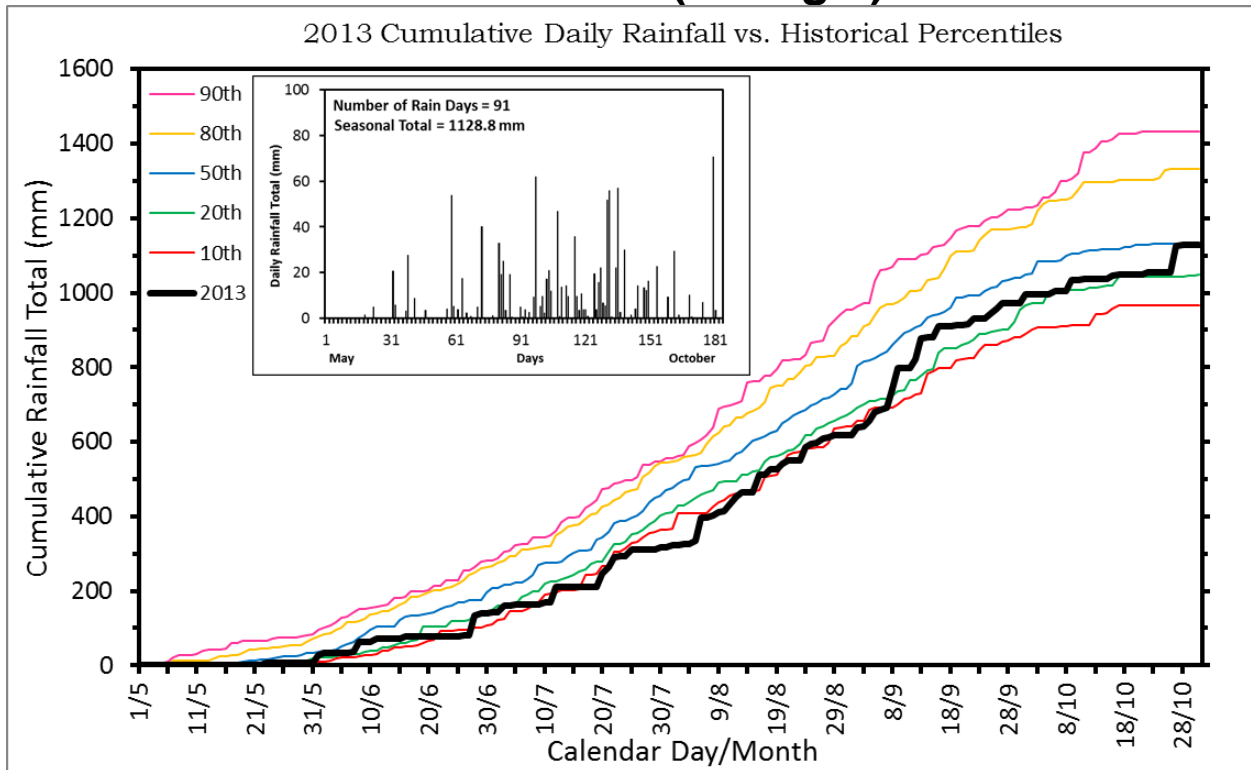
ZINGUINCHOR (Senegal)



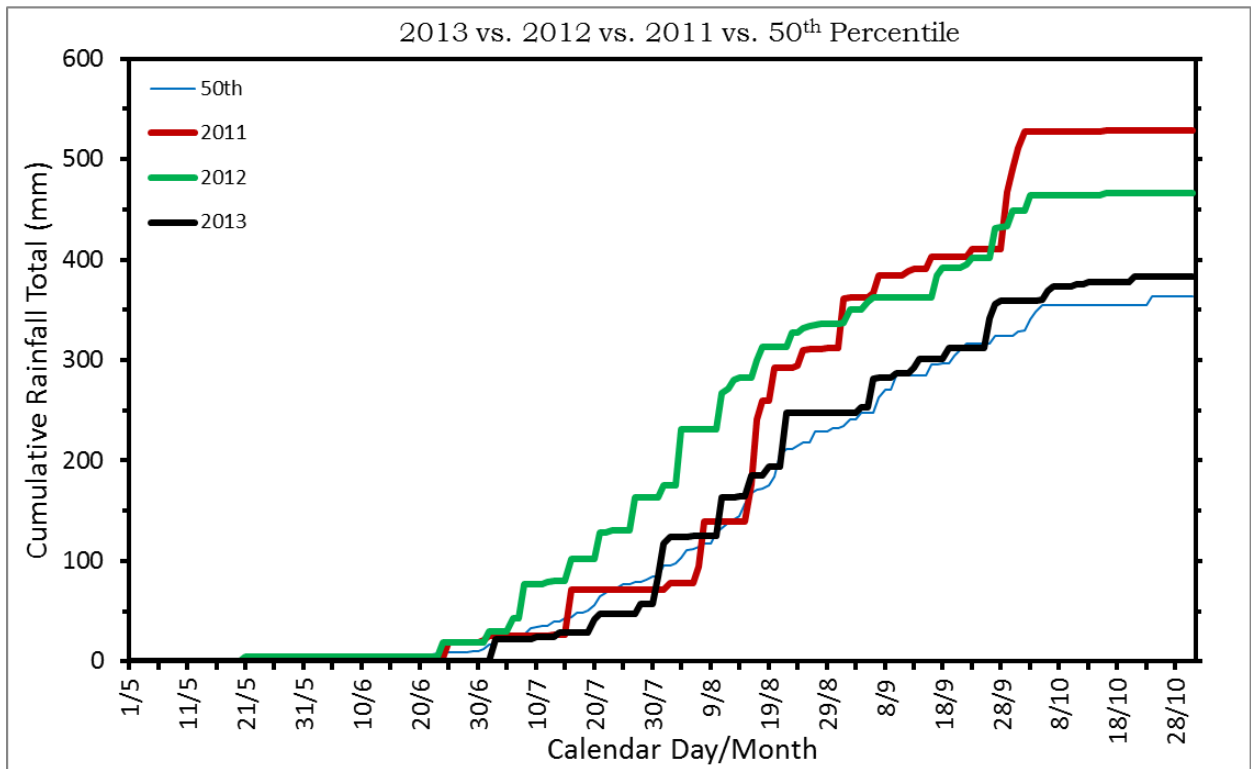
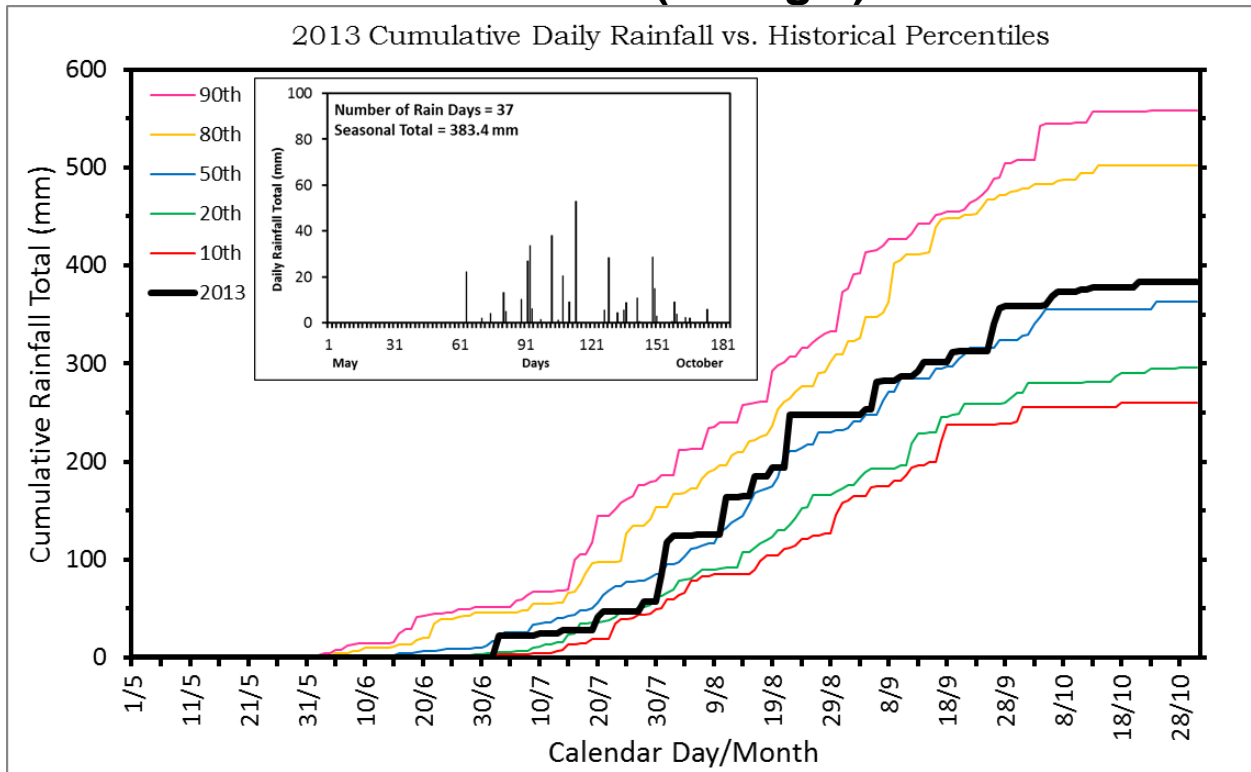
KOLDA (Senegal)



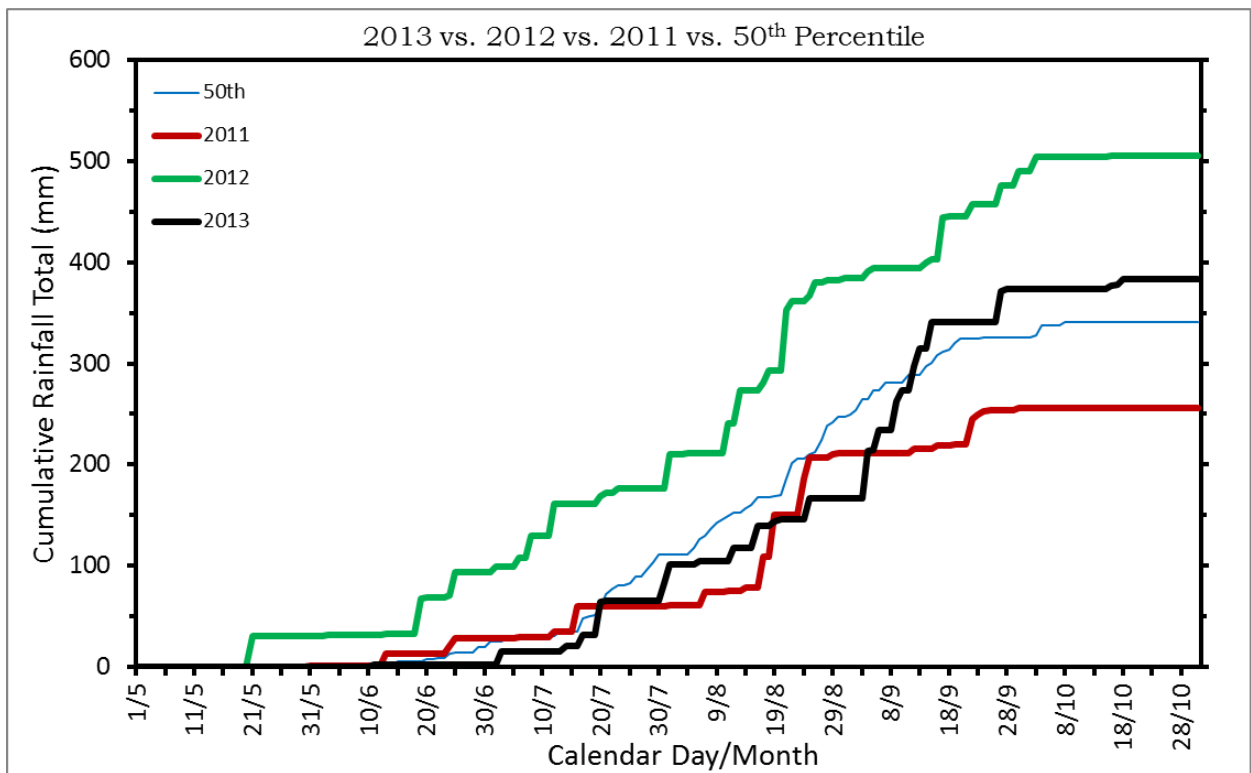
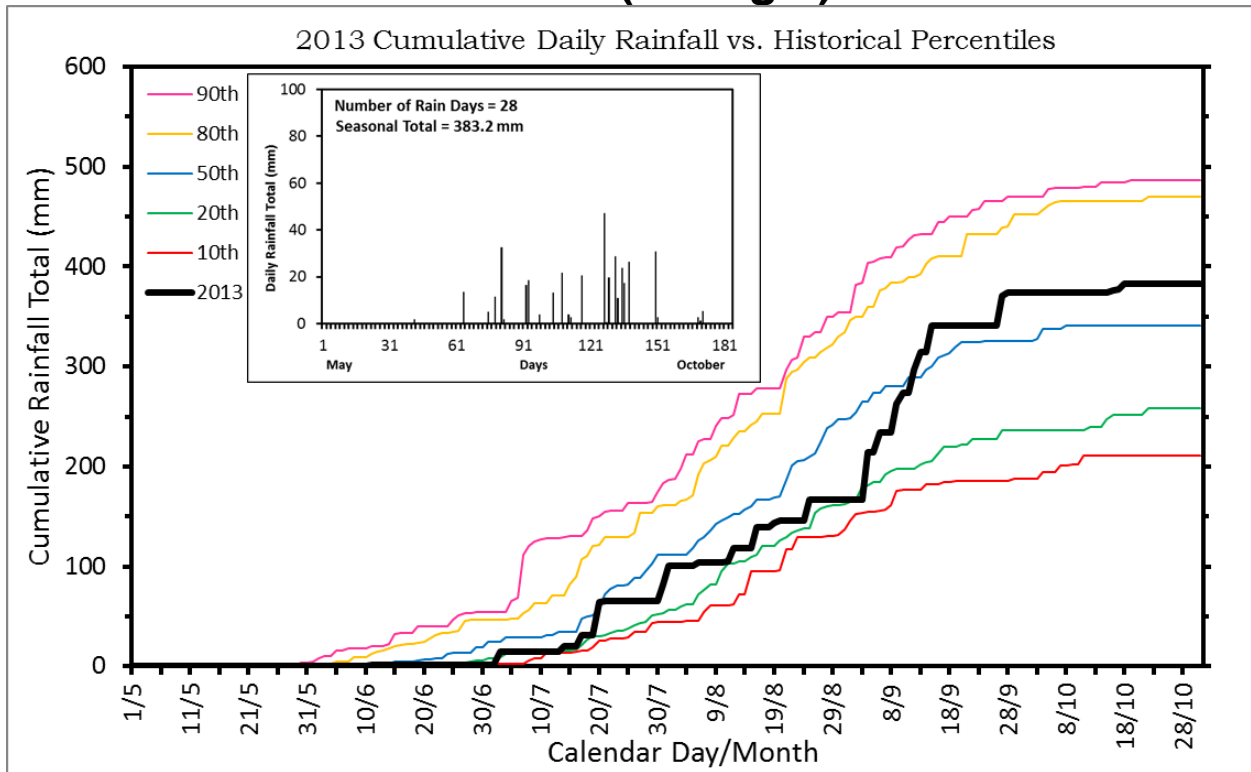
KEDOUGOU (Senegal)



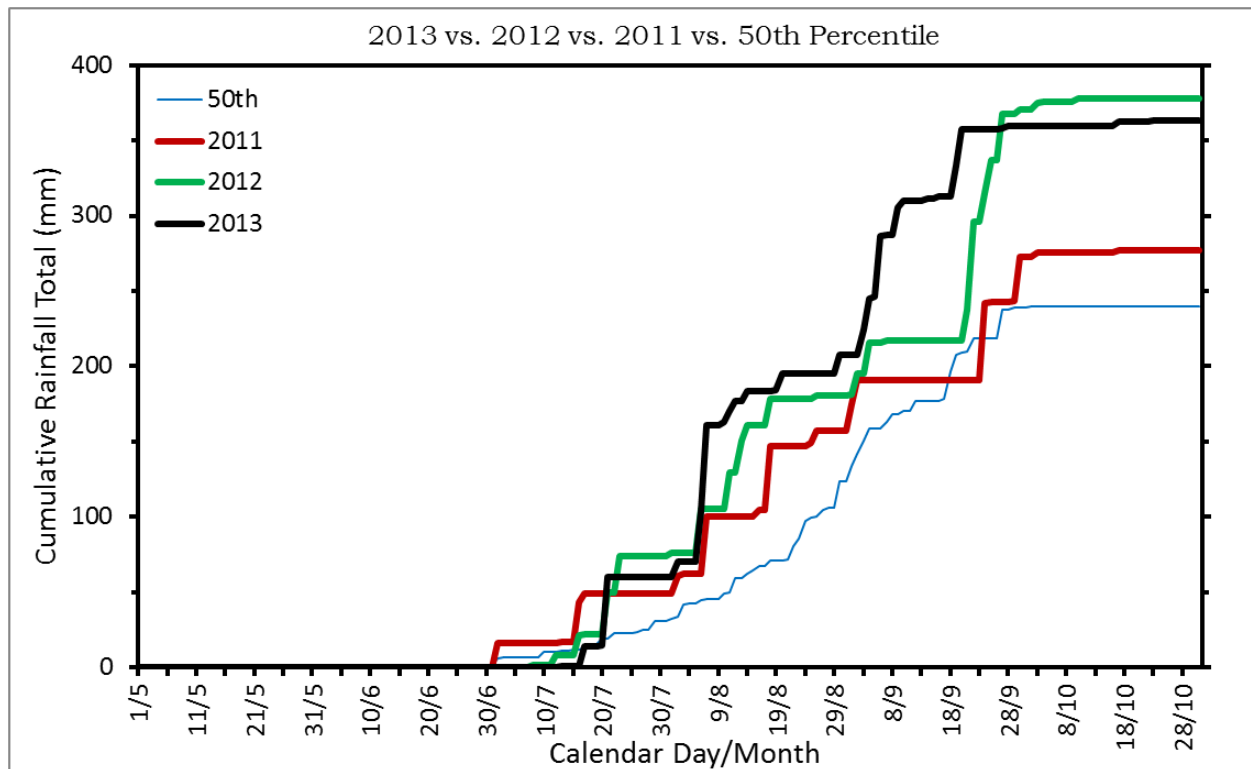
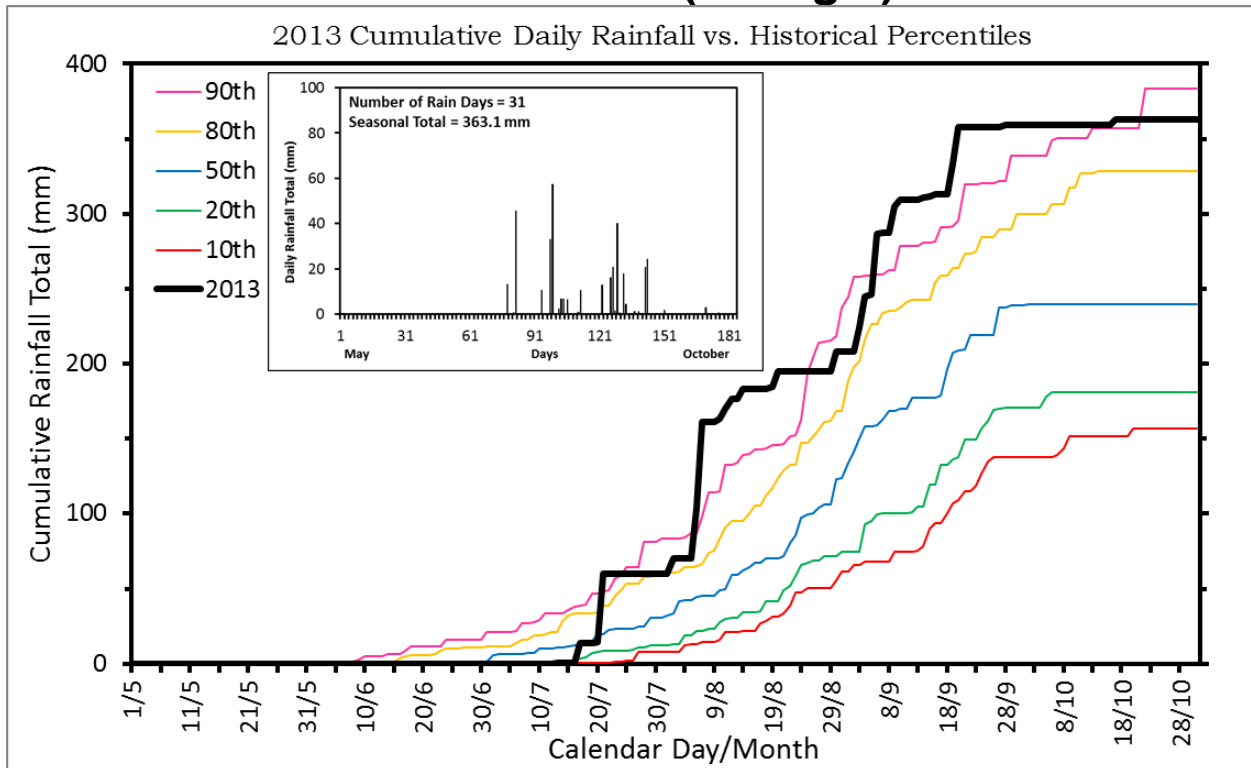
LINGUERE (Senegal)



MATAM (Senegal)



SAINT LOUIS (Senegal)



PODOR (Senegal)

