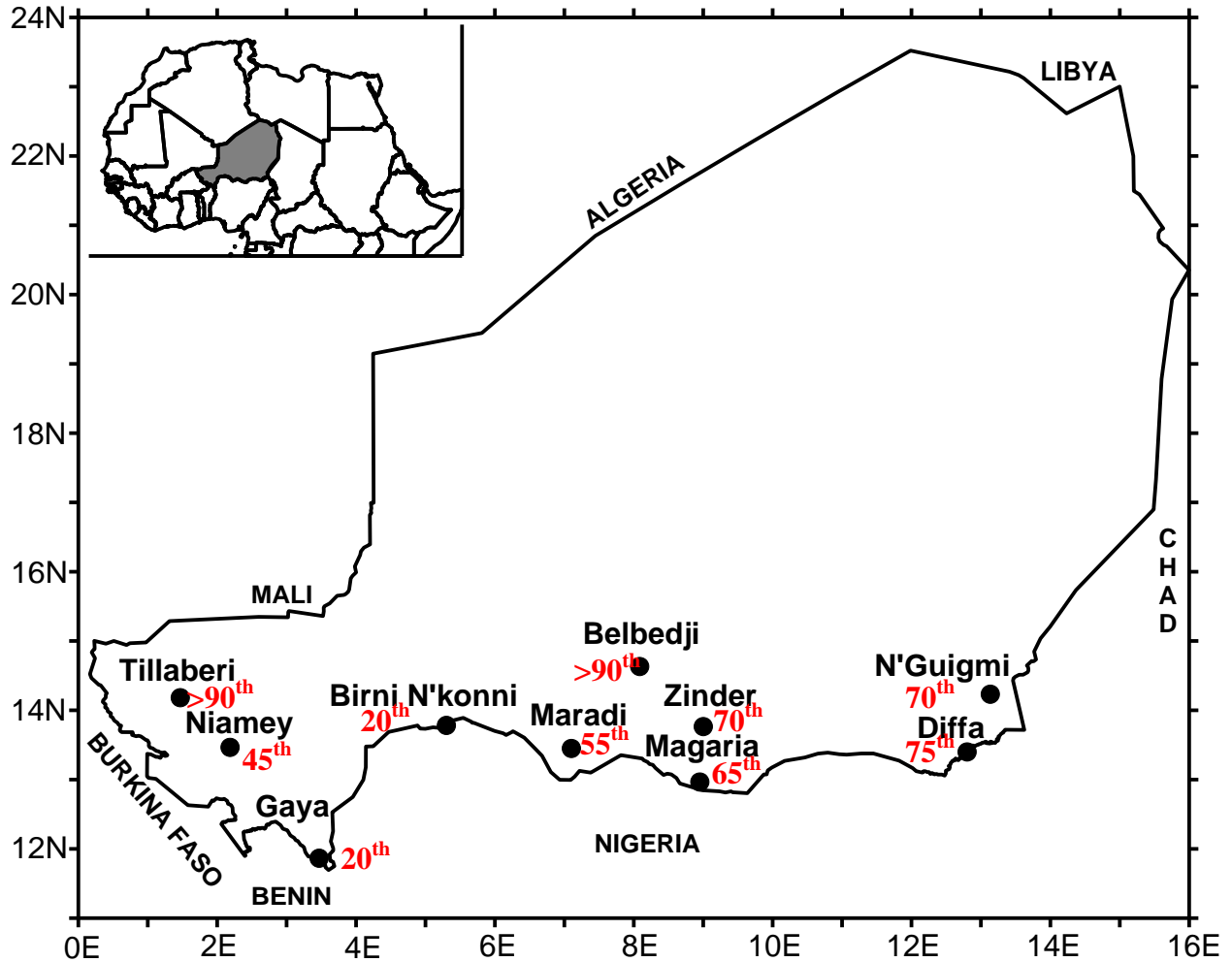


2013 MONSOON RAINWATCH OVER NIGER

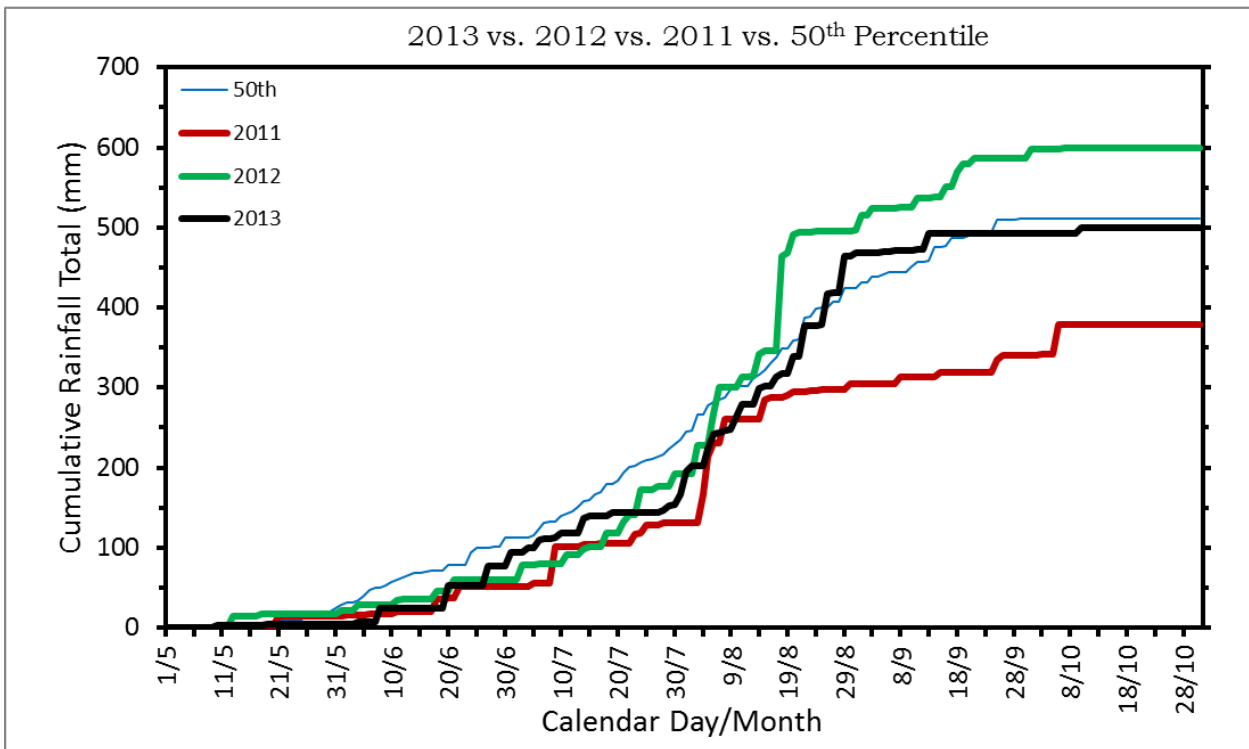
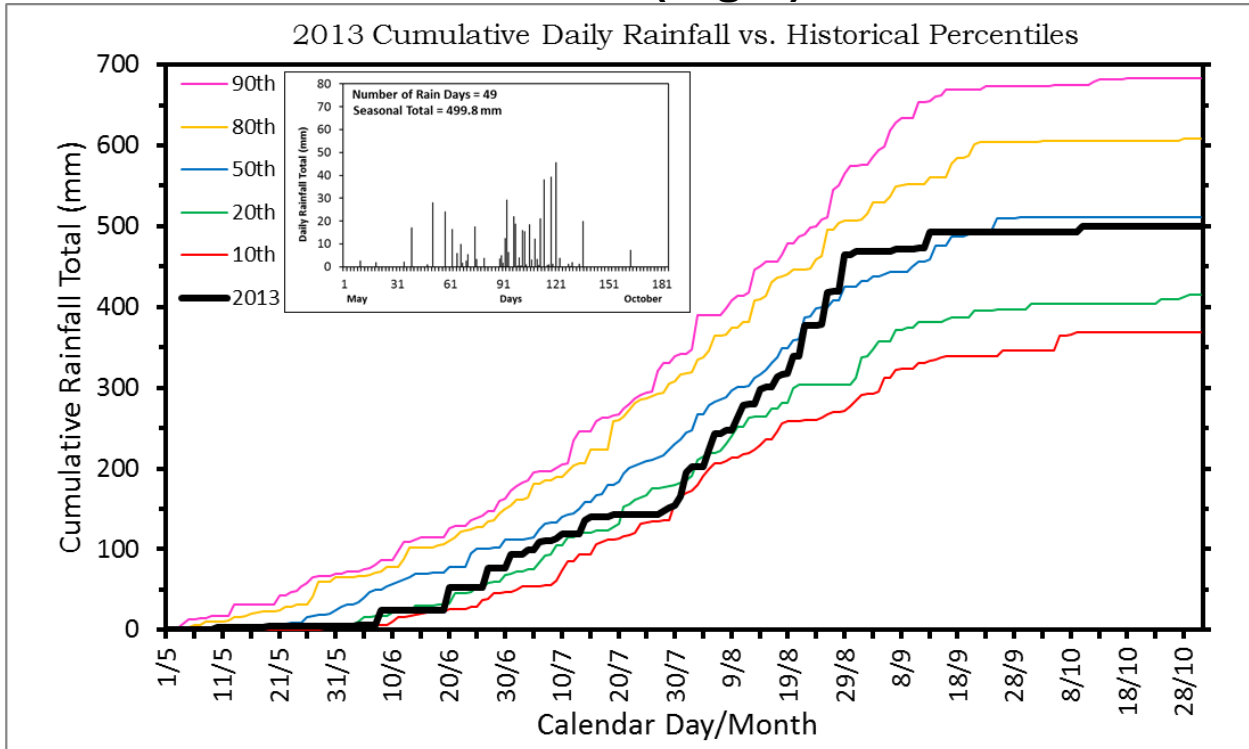
FROM MAY 1 TO OCTOBER 31, 2013

RAINWATCH NETWORK STATIONS FOR NIGER

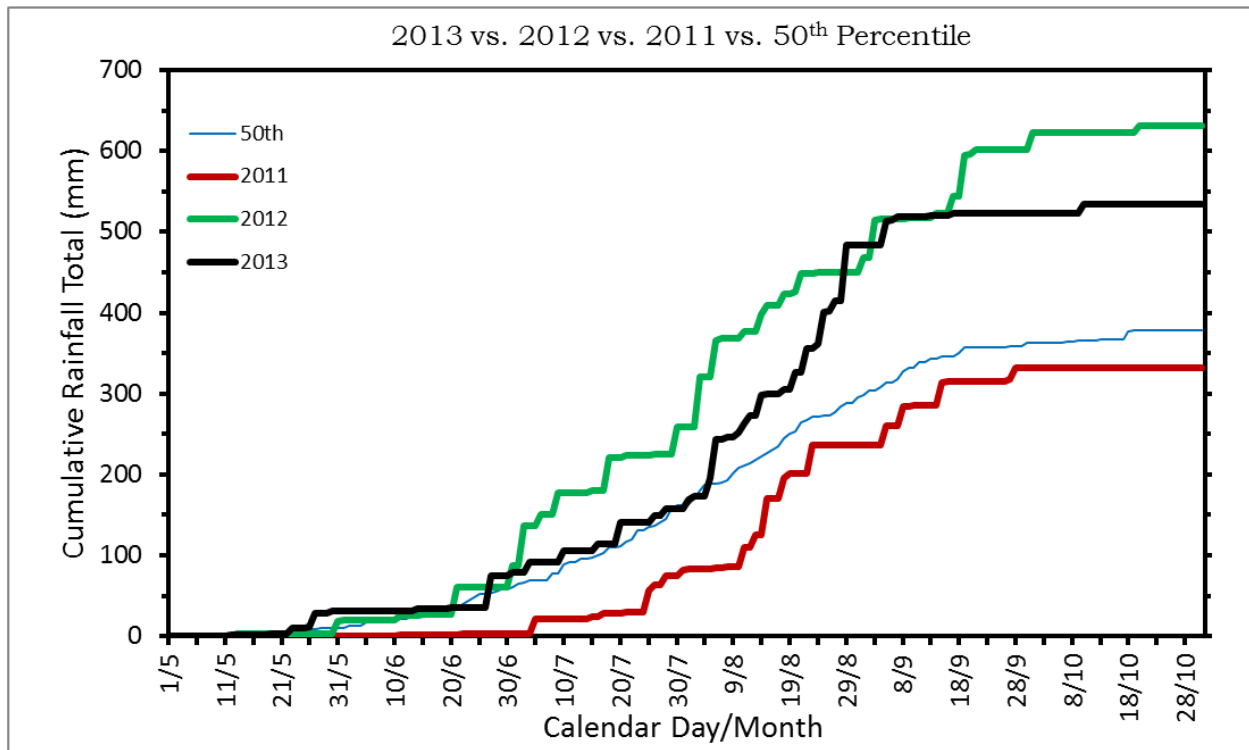
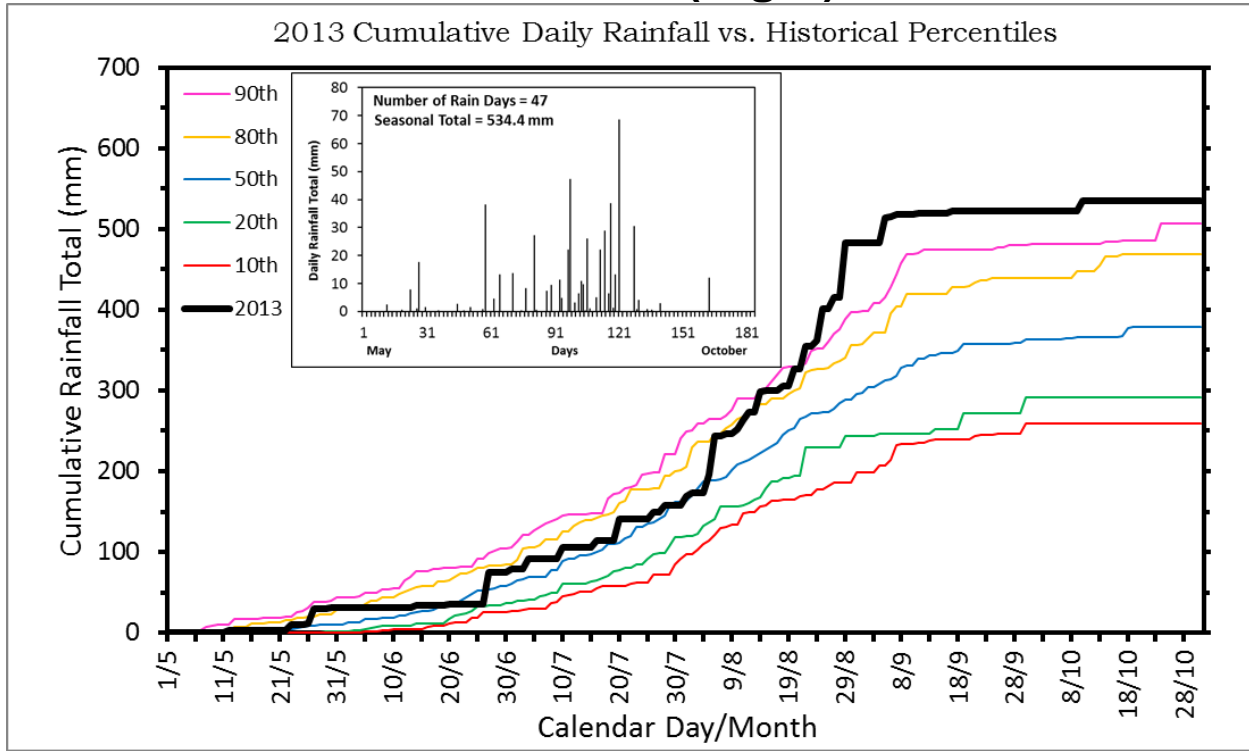


Number for each station gives the approximate cumulative percentile through October 31

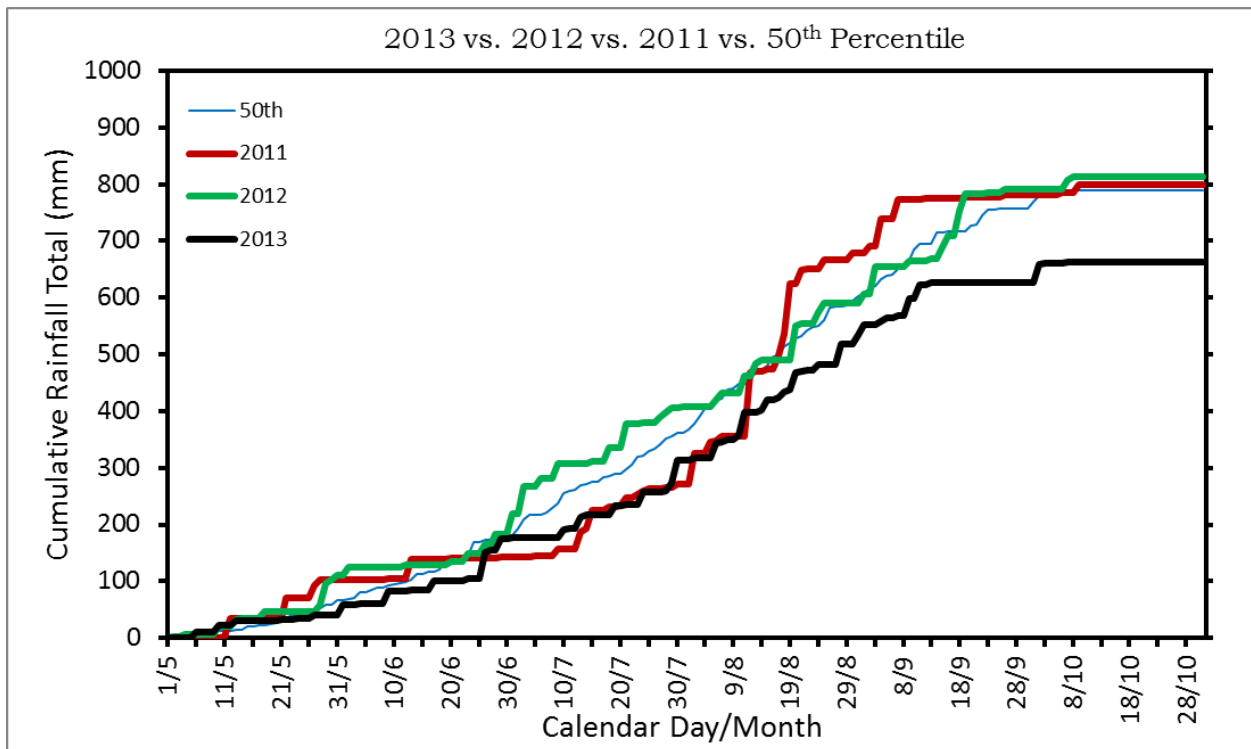
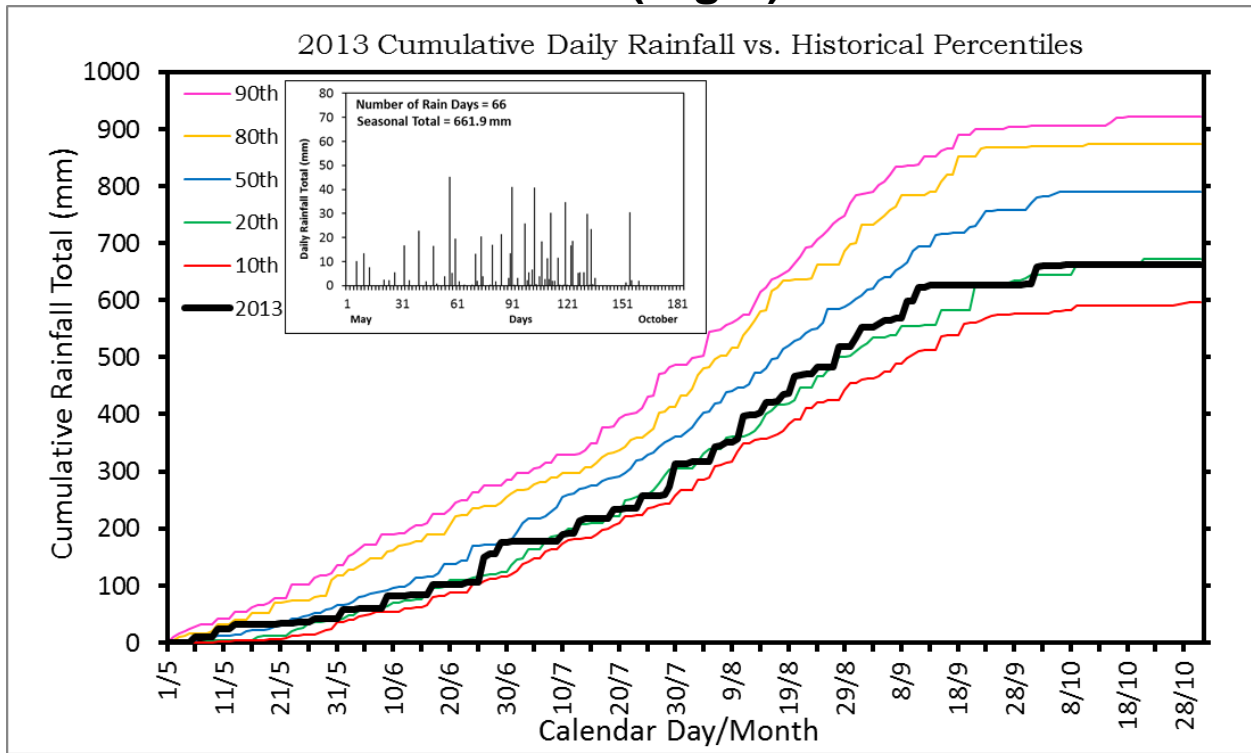
NIAMEY (Niger)



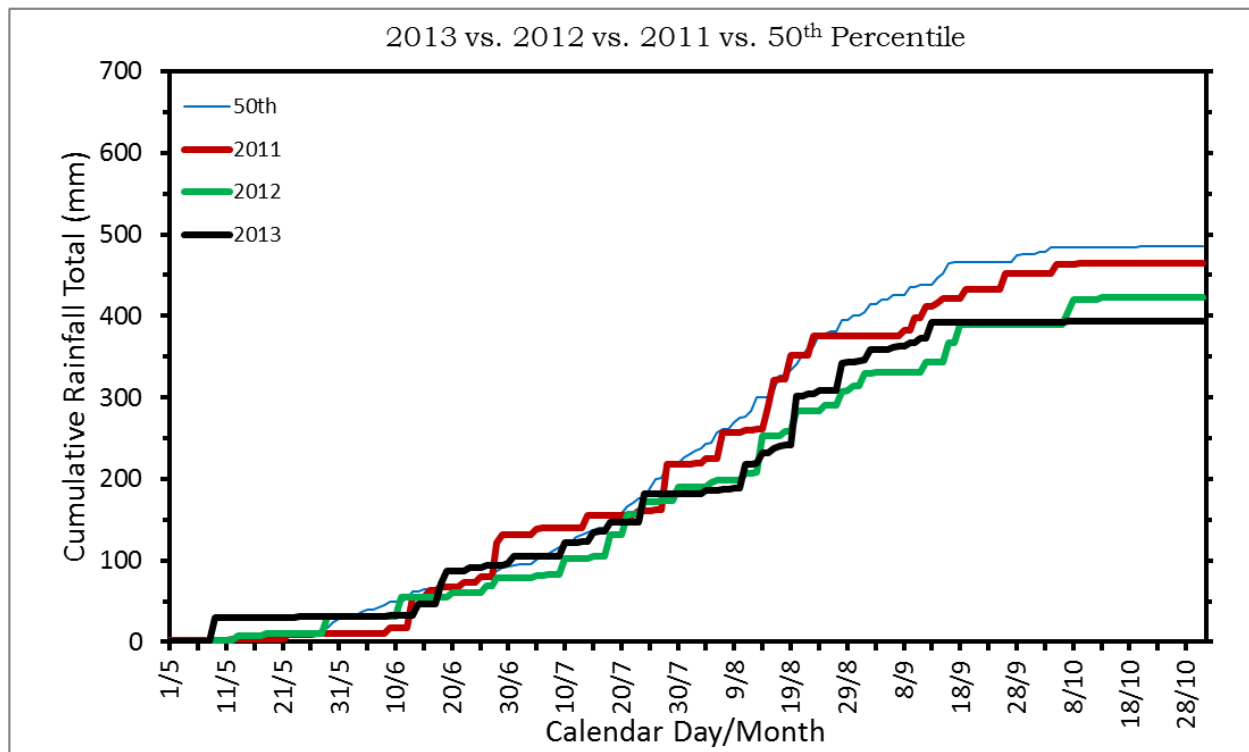
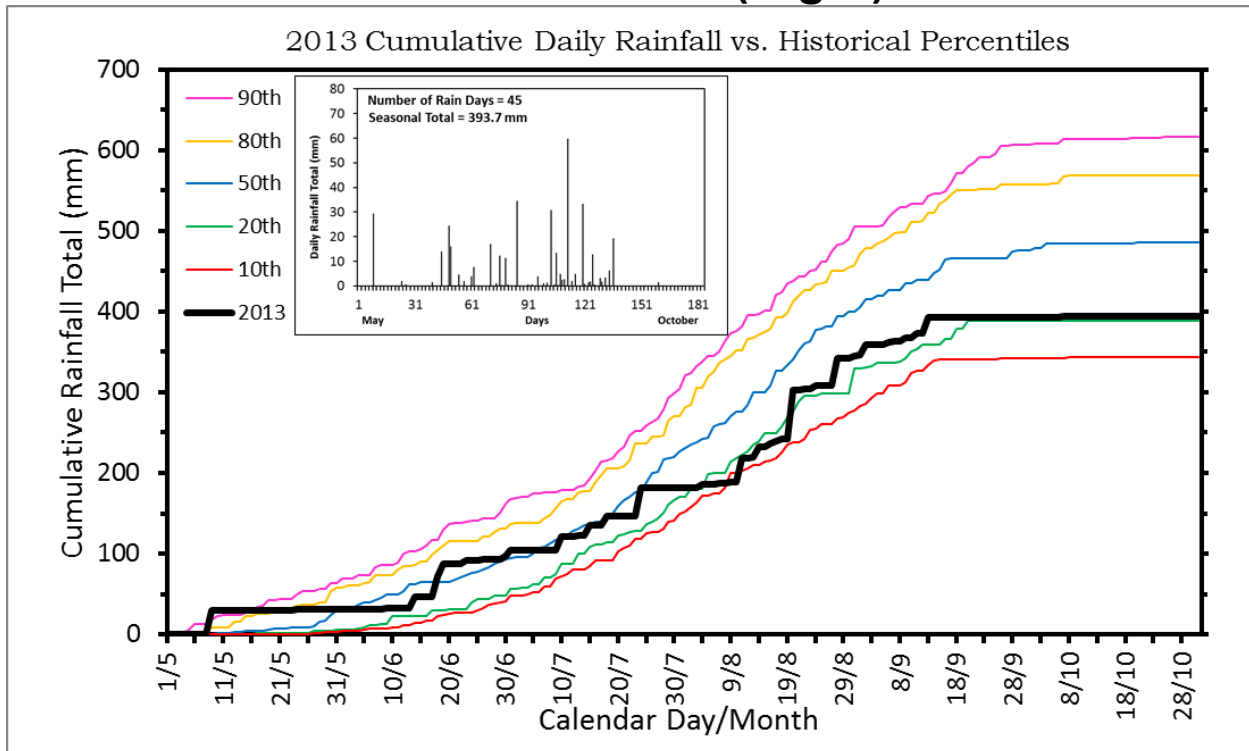
TILLABERI (Niger)



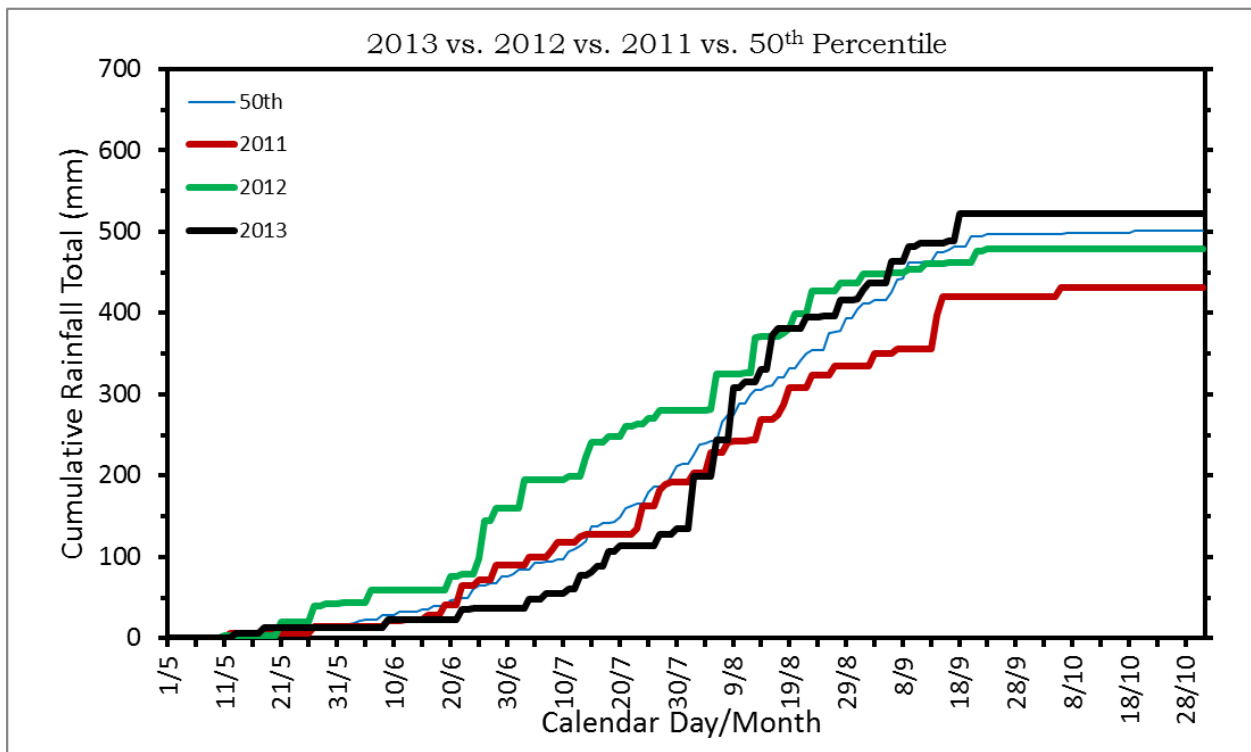
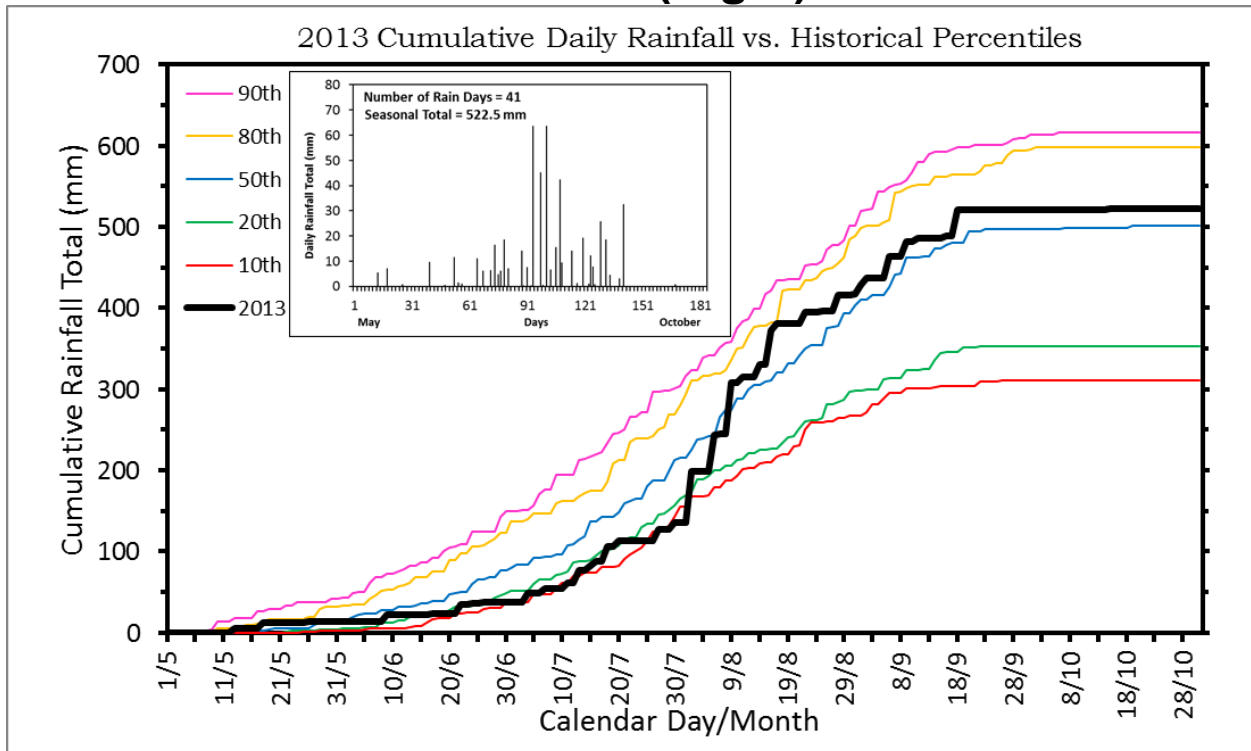
GAYA (Niger)



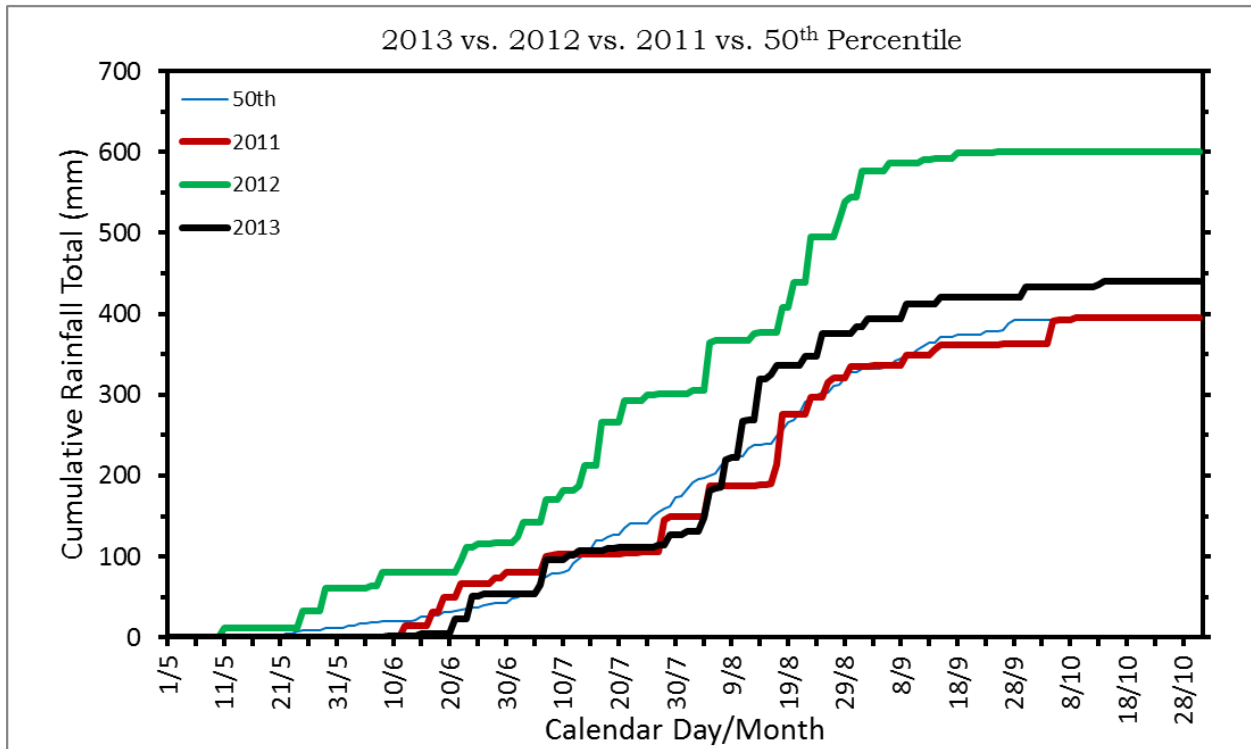
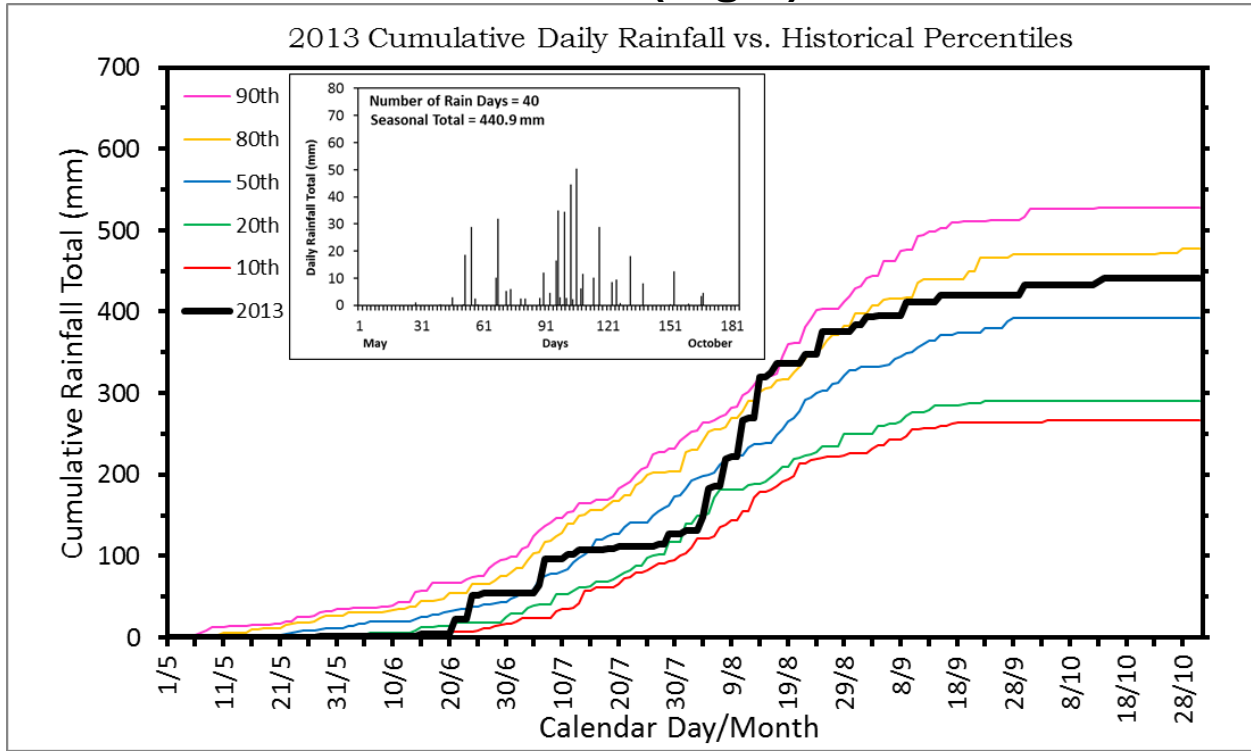
BIRNI N'KONNI (Niger)



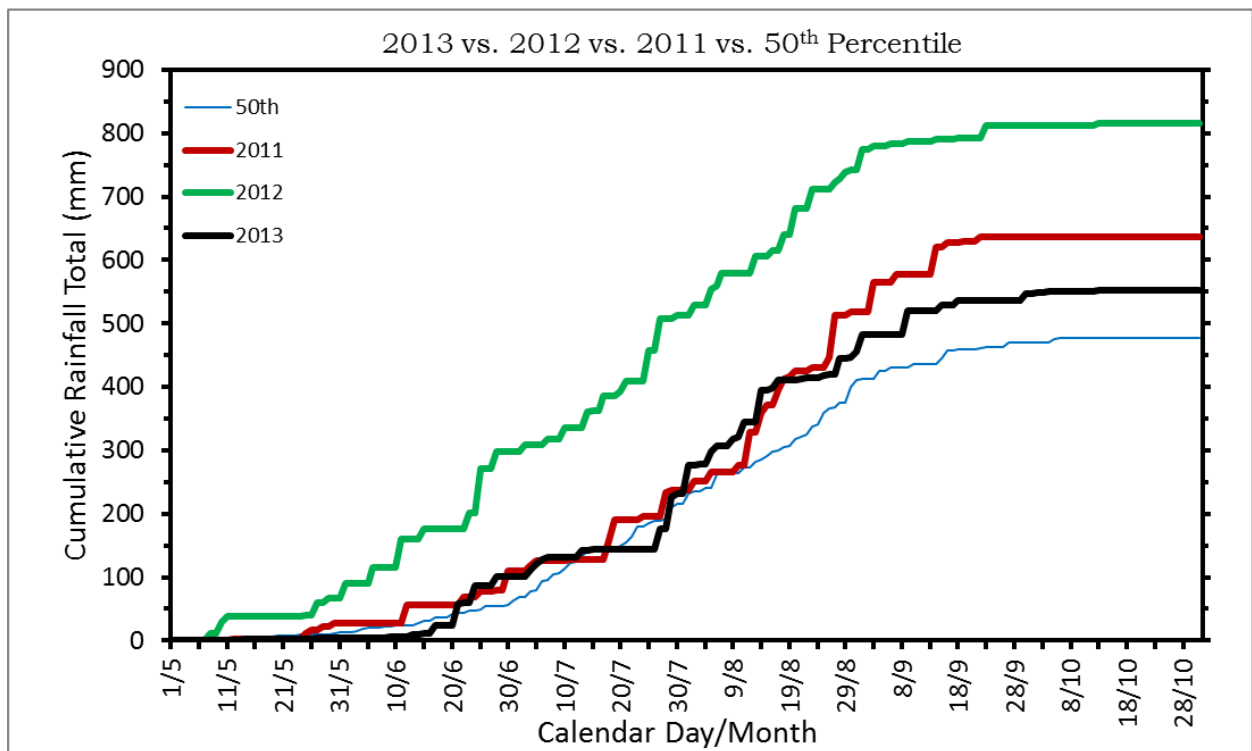
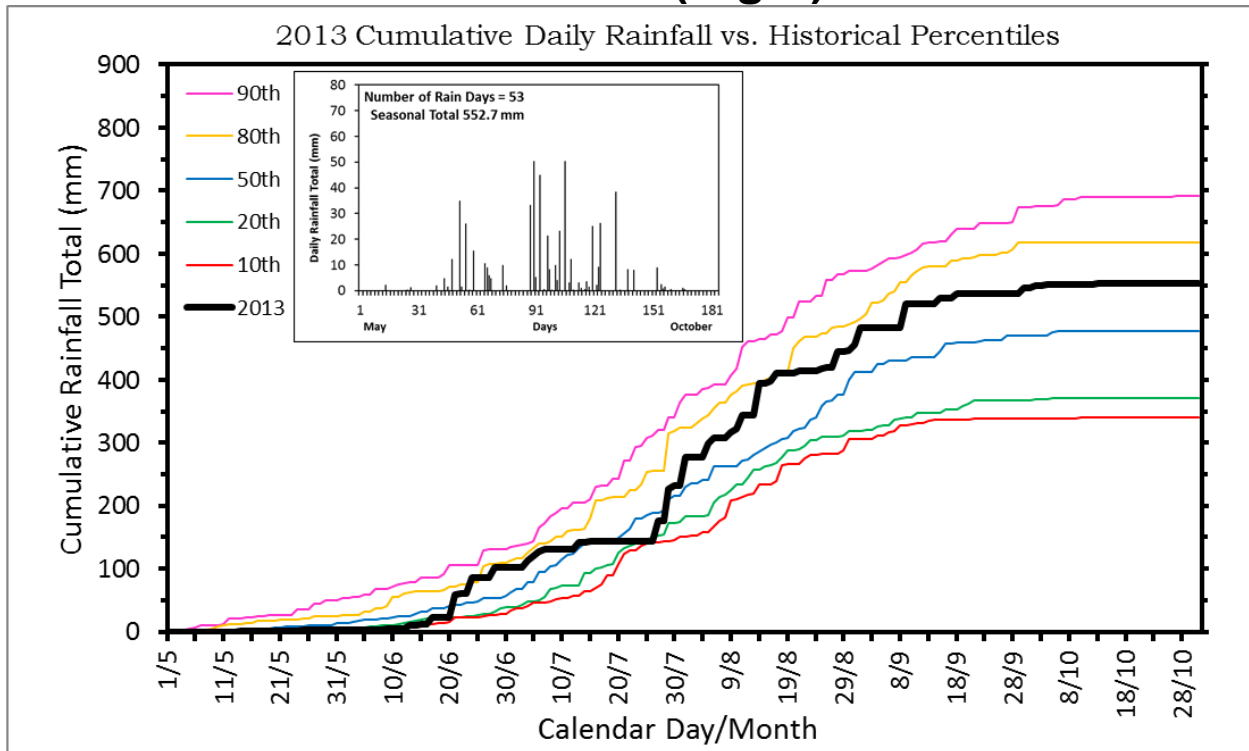
MARADI (Niger)



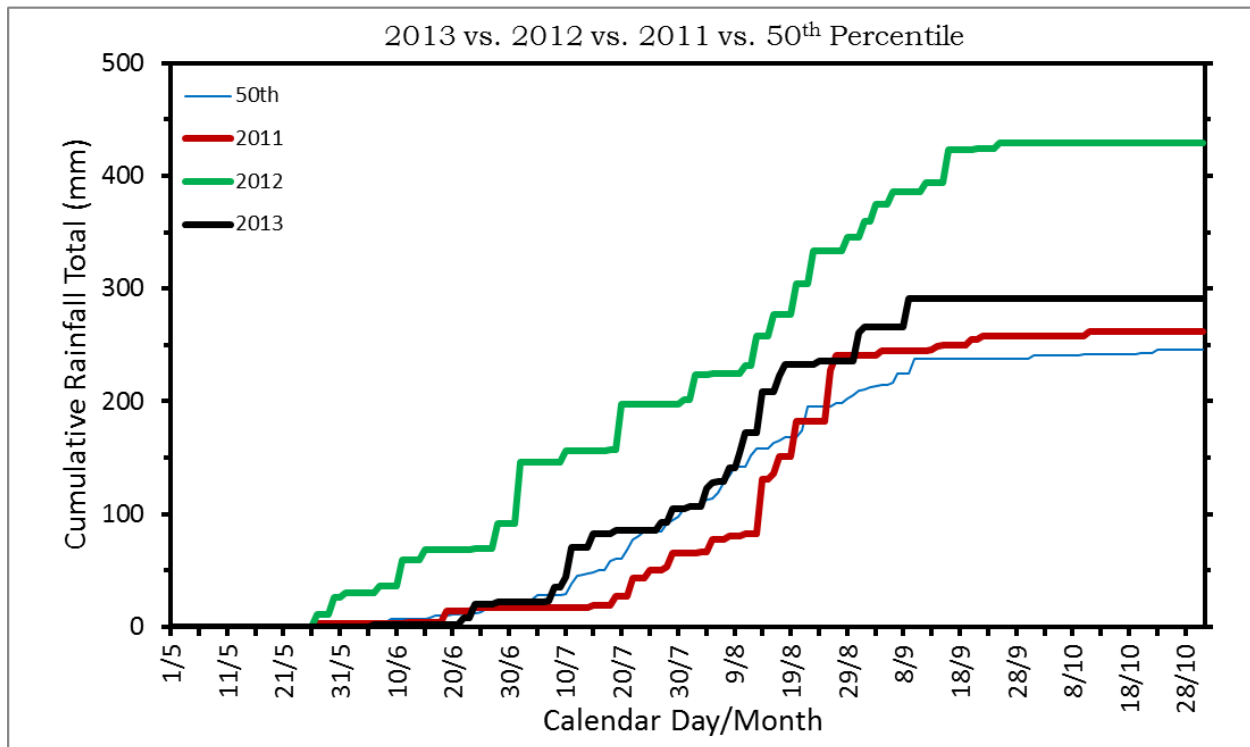
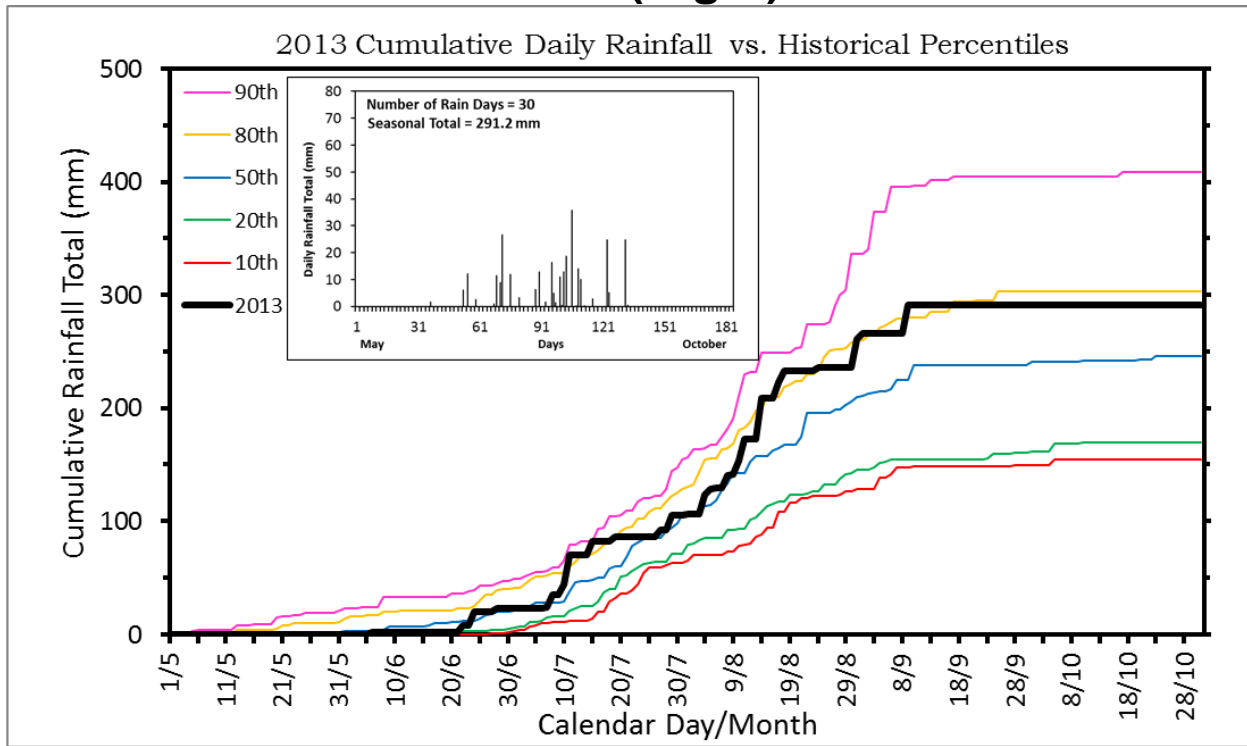
ZINDER (Niger)



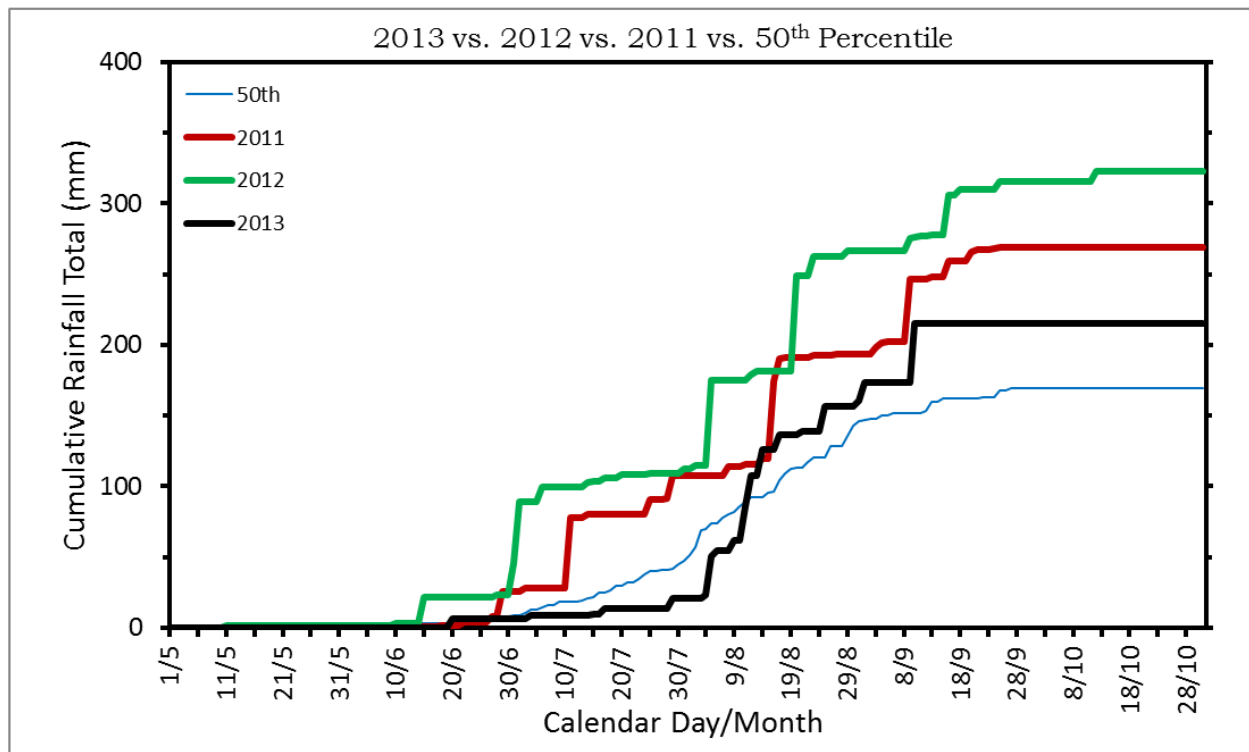
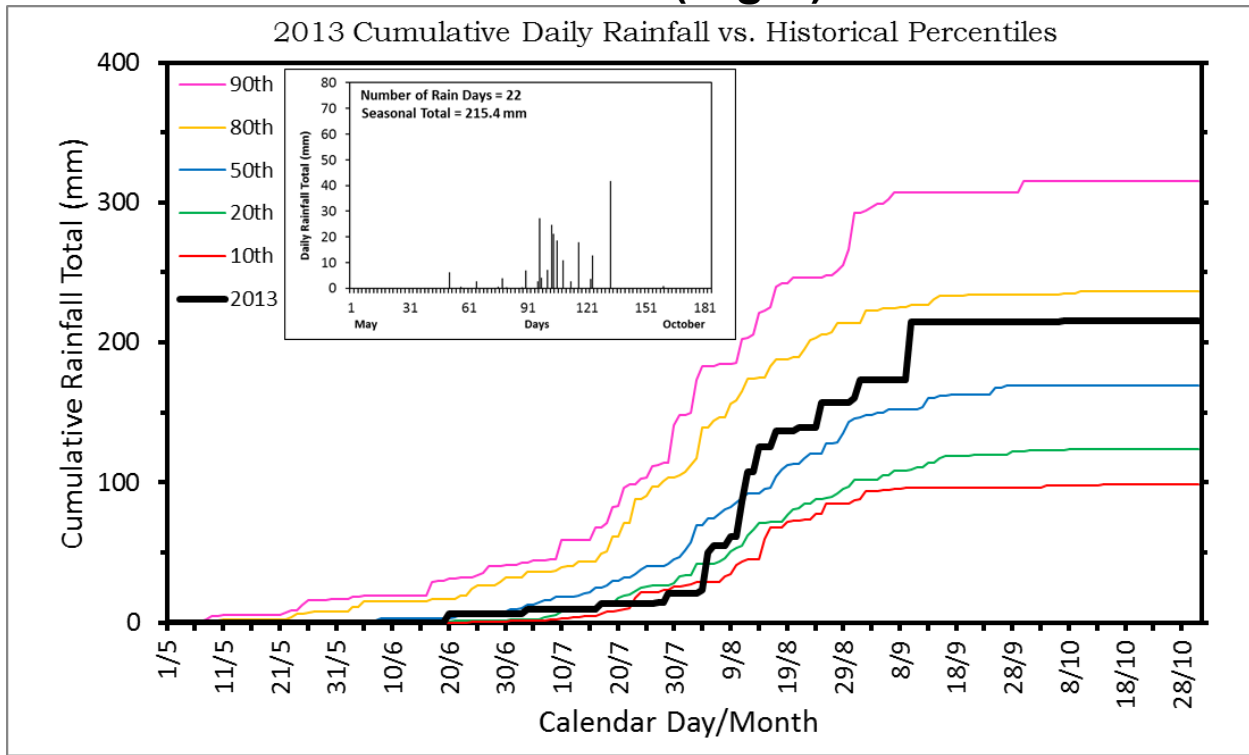
MAGARIA (Niger)



DIFFA (Niger)



N'GUIGMI (Niger)



BELBEDJI (Niger)

